



# Ventura County Farmworker Housing Study and Action Plan

## PROJECT INFORMATION



A Project coordinated and funded by the County of Ventura, all its ten cities, and VCTC; and in partnership with *House Farm Workers!*



COORDINATED AND FUNDED BY THE COUNTY OF VENTURA, AND ALL TEN CITIES;  
AND IN PARTNERSHIP WITH HOUSE FARM WORKERS!



### PHASE 2-3 TEAM

**Project Partners:** County of Ventura, Planning Division; and *House Farm Workers!*

**Consulting Team:** BAE Urban Economics; and County of Ventura, Human Services Agency/Farmworker Resource Program



## PROJECT PURPOSE

Initiated in Fall 2021 - to identify housing needs of farmworkers in Ventura County, and to consider alternate solutions to improve and develop much-needed farmworker housing throughout the County.

COMPLETED

- Phase 1:**
- Established the Advisory Council
  - Selected a Consultant team for Phases 2 and 3.

- PHASE 2:**
- Developed Survey Methodology
  - Designed Survey Instruments
  - Developed Communications Plans
  - Training Materials



- PHASE 3:**
- Implemented Agricultural Employer and Farmworker Surveys, and Stakeholder Interviews
  - Conducted Farmworker Focus Group Outreach Engagement
  - Prepared Report summarizing results of Phase 2 and 3 efforts



NEXT STEPS  
(2025-26)

- Phase 4:**
- Select Study Consultant team
  - Develop Draft Farmworker Study and Action Plan document utilizing survey results
  - Conduct community outreach event(s) to inform action plan items for all jurisdictions and stakeholders



- Phase 5:**
- Community Engagement in implementing the Action Plan
  - Finalize Study and Action Plan for all jurisdictions



The Study and Action Plan will be utilized by the incorporated cities and the County to develop targeted programs and strategies to address the identified housing needs of farmworkers and to support agricultural businesses with a stable and healthy workforce.

Coordinated and funded by the County of Ventura, all its ten cities, VCTC; and in partnership with *House Farm Workers!*

# Ventura County Farmworker Housing Study: Phases 2 & 3 Highlights

## EMPLOYERS & STAKEHOLDERS



40 representatives of Ventura County agricultural employers responded to the survey between March and August, 2023

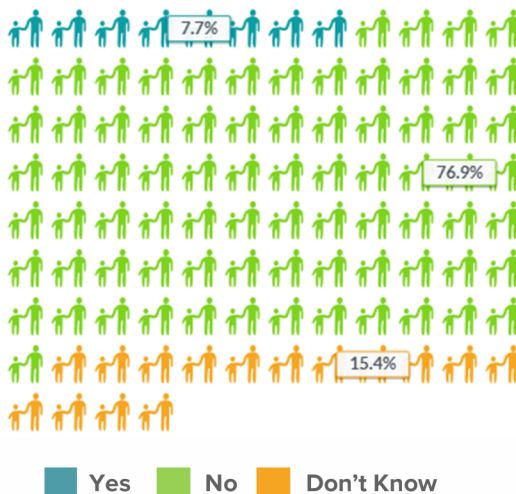
11 Stakeholders were interviewed between 2022 and 2023

### Stakeholder Representation Across Key Sectors



Berries (9.48%)	Citrus (36.46%)
Avocados (33.77%)	Rotational Crops (5.43%)
Other Nursery (4.06%)	Other Crops (2.69%)
Farm Labor Contractor (2.69%)	
Packing House (5.43%)	

### Is there enough farmworker housing available?



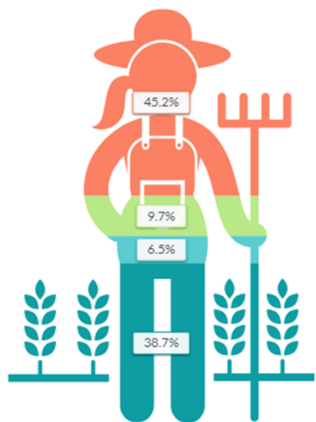
There is an acute challenge of deteriorating and affordable housing



Farmworkers' low wages exacerbate the housing crisis

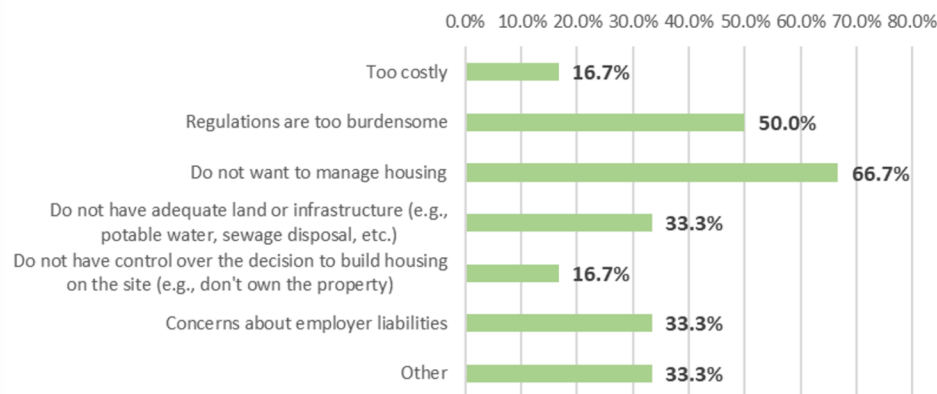


94% expect stable to growing needs



Increase	Decrease
Reduce in labor needs due to increases in efficiency/ advances in tech	
Remain the same	

### Reasons Cited for Not Providing Employee Housing



Employers face difficulties in retaining a sufficient workforce due to housing challenges





Coordinated and funded by the County of Ventura, all its ten cities, VCTC; and in partnership with *House Farm Workers!*

Ventura County Farmworker Housing Study: Phases 2 & 3 Highlights

# FARMWORKERS



417 representatives of Ventura County farmworkers responded to the survey between April and October, 2023

Surveys were conducted in Spanish, Mixteco, Zapoteco, Purepecha, and English

47% male, 57% female

Ages ranged from 18 to 78



Male (42.04%) Female (57.16%)  
I'd rather not say (0.8%)

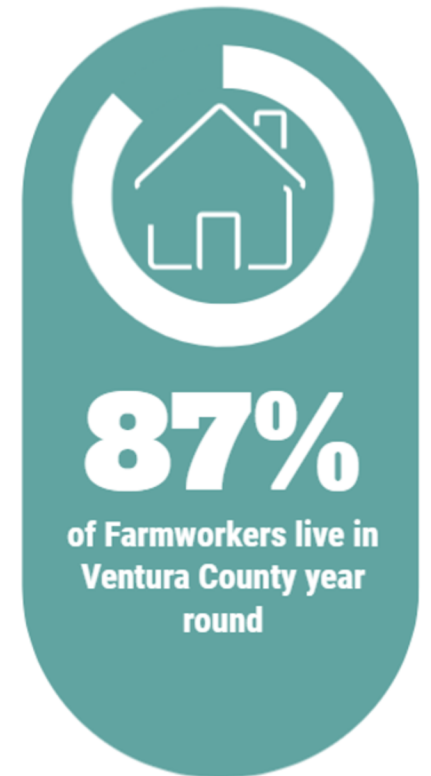
Half have lived in Ventura County longer than 15 years

Median years living in Ventura County

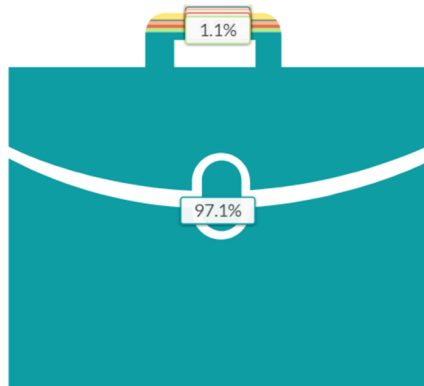


15 Years

Residency in Ventura County ranges from 5 months to 60 years



97.1% only work in agriculture



No Other Jobs/Only in Ag. Retail/Services  
Restaurant/Hospitality Construction/Maintenance  
Childcare Other

89.4% would prefer a single-family house



House (89.4%) Mobile Home/Trailer (2.7%)  
Apartment (6.55%) Did not answer (1.4%)





Coordinated and funded by the County of Ventura, all its ten cities, VCTC; and in partnership with *House Farm Workers!*

## Ventura County Farmworker Housing Study: Phases 2 & 3 Highlights

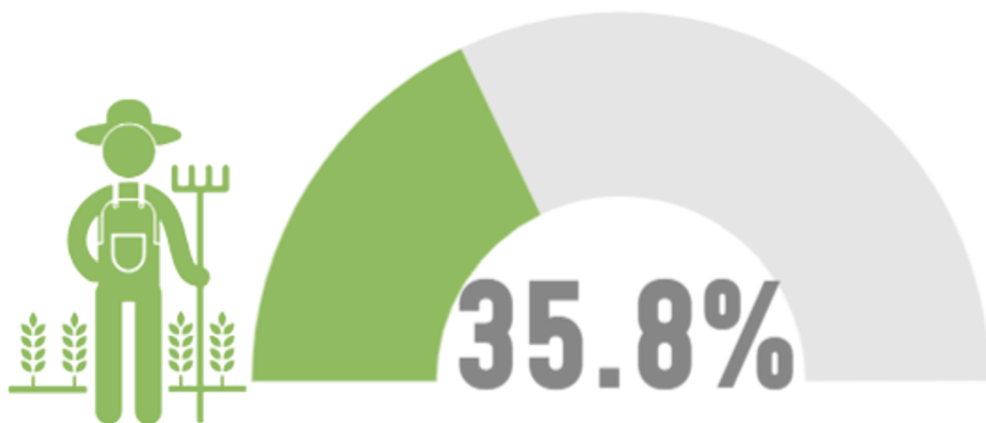
# FARMWORKERS



417 representatives of Ventura County farmworkers responded to the survey between April and October, 2023

Surveys were conducted in Spanish, Mixteco, Zapoteco, Purepecha, and English

Conditions could cumulatively pose risks to health or safety/security



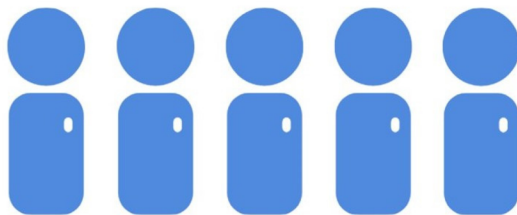
of Farmworkers report six or more repairs needed for their housing

Types of repairs may range from minor issues (e.g., replace smoke detector, repair screens on windows, provide consistent trash collection, etc.) to major repairs affecting health & safety (e.g., fix poor condition of sewer/septic system, no separate kitchen, mold, mildew, etc.) which may need addressing if they occur in the same unit

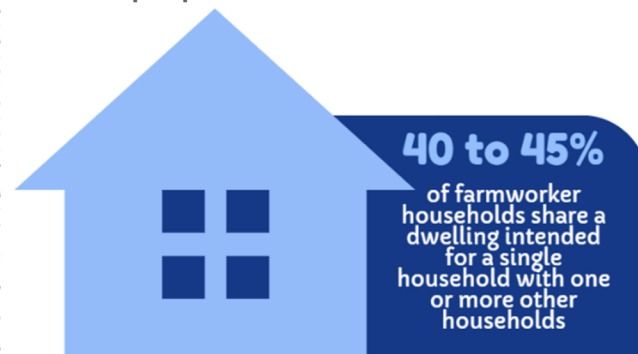


- 48% of the household income is spent towards housing
- The median personal earnings in 2022 was between \$22,500 and \$24,999

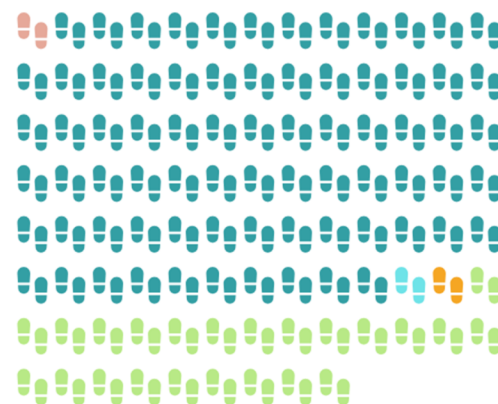
Median size of households = 5 persons



40 to 45% share a bathroom or kitchen with people from outside their household



74% of respondents use personal vehicles for commute



- On foot (0.99%)
- Bicycle (0.3%)
- Personal Vehicle (73.76%)
- Carpooling (0.89%)
- Employer-provided bus or van (0.89%)
- Pay someone to take you (23.17%)