



**American Jewish University,
Brandeis Bardin Campus Facilities
Upgrade Project**

Arborist Report

February 16, 2022

Updated August 30, 2022

Prepared for:

American Jewish University, Brandeis-
Bardin Campus
1101 Peppertree Lane
Brandies, CA 93064

Prepared by:

Stantec Consulting Services Inc.
290 Conejo Ridge Avenue
Thousand Oaks, CA 91361-4972



AMERICAN JEWISH UNIVERSITY, BRANDEIS BARDIN CAMPUS FACILITIES UPGRADE PROJECT

This document entitled American Jewish University, Brandeis Bardin Campus Facilities Upgrade Project was prepared by Stantec Consulting Services Inc. ("Stantec") for the account of American Jewish University (the "Client"). Any reliance on this document by any third party is strictly prohibited. The material in it reflects Stantec's professional judgment in light of the scope, schedule and other limitations stated in the document and in the contract between Stantec and the Client. The opinions in the document are based on conditions and information existing at the time the document was published and do not take into account any subsequent changes. In preparing the document, Stantec did not verify information supplied to it by others. Any use which a third party makes of this document is the responsibility of such third party. Such third party agrees that Stantec shall not be responsible for costs or damages of any kind, if any, suffered by it or any other third party as a result of decisions made or actions taken based on this document.

Prepared by Ethan Martin
(signature)
Ethan Martin, Project Biologist/ISA Certified Arborist #WE-6832A

Prepared by Diane Narem
(signature)
Diane Narem, Project Ecologist

Reviewed by Geoff Hoetker
(signature)
Geoff Hoetker, Senior Biologist

Approved by Jared Varonin
(signature)
Jared Varonin, Principal Biologist/Ecosystems Practice Leader



Table of Contents

ABBREVIATIONS	II
1.0 INTRODUCTION.....	1
2.0 PROJECT DESCRIPTION.....	1
3.0 REGULATORY REQUIREMENTS	1
4.0 METHODS	3
5.0 RESULTS	4
6.0 RECOMENDATIONS.....	59

LIST OF TABLES

Table 1 Protected Trees	2
Table 2 Tree Inventory	5
Table 3 Tree Impacts	59

LIST OF APPENDICES

APPENDIX A FIGURES

APPENDIX B REPRESENTATIVE PHOTOS

Abbreviations

AJU	American Jewish University Brandeis-Bardin Campus
BSA	Biological Study Area
DBH	diameter at breast height
GPS	Global Positioning System
ISA	International Society of Arboriculture
Stantec	Stantec Consulting Services Inc.

1.0 INTRODUCTION

Stantec Consulting Services Inc. (Stantec) conducted a tree survey for the American Jewish University, Brandeis-Bardin Campus (AJU) in support of proposed facilities upgrades (Project). The purpose of the tree survey was to collect data on the trees present within the Project footprint for inclusion in the Project planning and design, and to support the issuance of permits/authorizations from the County of Ventura in the event the removal/trimming of trees within the Project footprint is necessary. The survey included an approximately 20-acre Project footprint and a 25-foot buffer comprising the Biological Study Area (BSA). Survey efforts were led by International Society of Arboriculture (ISA) certified arborist, Ethan Martin. This report summarizes the information collected during the survey, provides details on the applicable County tree ordinances and regulations that apply to the proposed Project, and presents proposed mitigation for the replacement of removed trees as necessary.

2.0 PROJECT DESCRIPTION

The BSA is located within the boundaries of the AJU Brandeis-Bardin Campus within both developed and natural areas in the Brandeis community near the City of Simi Valley (refer to Appendix A, Figure 1).

The proposed Project includes the following:

- Replace existing administration buildings and staff lounge with a new Welcome Center, which will include central offices, resource center, staff lounge and restrooms. The Welcome Center will be the new arrival area for the camp and will include a parking lot and drop off area.
- New accessible camper housing and bathrooms at a new location, outside of the flood plain. Existing camper structures to remain and be repurposed at a later date, under a separate permit.
- Addition of an exterior open-air shade pavilion north of the existing art center. The new structure will have a couple of storage rooms.
- Existing central lawn to be landscaped and designed to connect existing spaces such as the dance pavilion, amphitheater, dining hall, and art center. This area is to be known as the Central Green/Heart of the Campus.

3.0 REGULATORY REQUIREMENTS

Ventura County's Tree Protection Regulations (Sec. 8107-25) define "protected trees" using multiple criteria, including the zone where the tree occurs. Protected tree criteria are summarized in Table 1 and include historical and heritage Trees. The County defines "heritage trees" as any species of tree with a single trunk of 90 or more inches in girth or with multiple trunks, two of which collectively measure 72



AMERICAN JEWISH UNIVERSITY, BRANDEIS BARDIN CAMPUS FACILITIES UPGRADE PROJECT

Regulatory Requirements

inches in girth (circumference) or more. In addition, species with naturally thin trunks when full grown (such as Washington palm [*Washingtonia robusta*]), species with naturally large trunks at an early age (such as some date palms [*Phoenix* spp.]), or trees with unnaturally enlarged trunks due to injury or disease (e.g., burls and galls) must be at least 60 feet all or 75 years old to be considered a heritage tree. “Historical trees” are defined as any tree or group of trees identified by the County or a city as a landmark or identified on the Federal or California Historic Resources Inventory to be of historical or cultural significance, or identified as contributing to a site or structure of historical or cultural significance.

Table 1 Protected Trees

Common Name/Botanical Name Genus/Species	Girth Standard (Circumference)	Applicable Zones	
		All Base Zones	SRP ¹
Alder <i>Alnus</i> all species	9.5 in.		X
Ash <i>Fraxinus dipetalous</i>	9.5 in.		X
Bay <i>Umbellularia californica</i>	9.5 in.		X
Cottonwood <i>Populus</i> all species	9.5 in.		X
Elderberry <i>Sambucus</i> all species	9.5 in.		X
Big Cone Douglas Fir <i>Pseudotsuga macrocarpa</i>	9.5 in.		X
White Fir <i>Abies concolor</i>	9.5 in.		X
Juniper <i>Juniperus californica</i>	9.5 in.		X
Maple <i>Acer macrophyllum</i>	9.5 in.		X
Oak (Single) <i>Quercus</i> all species	9.5 in.	X	X
Oak (Multi) <i>Quercus</i> all species	6.25 in.	X	X



AMERICAN JEWISH UNIVERSITY, BRANDEIS BARDIN CAMPUS FACILITIES UPGRADE PROJECT

Methods

Common Name/Botanical Name Genus/Species	Girth Standard (Circumference)	Applicable Zones	
		All Base Zones	SRP ¹
Pine <i>Pinus</i> all species	9.5 in.		X
Sycamore <i>Platanus</i> all species	9.5 in.	X	X
Walnut <i>Juglans californica</i>	9.5 in.		X
Historical Tree (any species)	(any size)	X	X
Heritage Tree ² (any species)	90.0 in.	X	X

X Indicates the zones in which the subject trees are considered protected trees.

¹ SRP - Scenic Resource Protection Overlay Zone.

² Refer to definition in Section 3.0 above.

Ventura County prohibits the altering, felling or removal of protected trees under the County's Tree Protection Regulations without a permit with a few exceptions. All permits must be approved by the Planning Director. An applicant can apply for either a Ministerial Tree Permit or a Discretionary Tree Permit.

4.0 METHODS

The survey was conducted by Biologist/ ISA Certified Arborist, Ethan Martin, Project Biologist Ashleigh Townsend, Project Biologist Ryan Blach, and Principal Biologist Jared Varonin on January 17, 18, and 25, 2022. Data collected during the survey included the species, trunk diameter at breast height (DBH) (i.e., 4.5 feet above the ground), the number of trunks, the height, the overall health of the tree, approximate dripline radius, and any pertinent notes about specific defects present. The locations of all inspected trees were recorded using a Global Positioning System (GPS) capable of sub-meter accuracy and maps of the tree locations are included in Appendix A, Figures 2-0 to 2-7.



Results

Evaluation of the health condition of each tree was graded using the following scale of A, B, C, D, and F:

- **A:** Excellent
- **B:** Average
- **C:** Fair
- **D:** Poor
- **F:** Dead/Dying

5.0 RESULTS

The data collected for each tree is summarized in Table 2 below. A total of 359 trees were inspected and mapped in the BSA. Dead trees were mapped but not included in the survey table. The trees onsite mainly consisted of California sycamore (*Platanus racemosa*), peppertree (*Schinus molle*), coast live oak (*Quercus agrifolia*), pines (*Pinus* sp.), and eucalyptus (*Eucalyptus* sp.). Notes/comments for each tree are provided in the table along with a list/definition of terms following the table. The majority of trees within the BSA are in relatively good health (health rating of 3 or higher). A common problem in the BSA is mistletoe (*Phoradendron leucarpum* ssp. *tomentosum*), a parasitic plant that spreads easily from tree to tree. Any mistletoe that remains in the area after trees are removed should be eliminated to prevent the spread to trees that will be planted in the future, as mistletoe can easily kill a small tree. Boring insects are also a common problem on the site, and usually will attack unhealthy or stressed trees.

A breakdown of trees by health rating is listed below:

- Health Rating F – 22 trees
- Health Rating D – 104 trees
- Health Rating C – 163 trees
- Health Rating B – 69 trees
- Health Rating A – 1 tree

Representative photos of trees are included in Appendix B.



AMERICAN JEWISH UNIVERSITY, BRANDEIS BARDIN CAMPUS FACILITIES UPGRADE PROJECT

Results

Table 2 Tree Inventory

Tree Tag No.	Common Name	Scientific Name	DBH (in)	Circumference (in)	Trunks/ Stems	Height (ft)	Dripline Diameter (ft)	Health	Protected Tree	Heritage Tree	Comments ¹
601	African sumac	<i>Searsia</i> sp.	78.5	246.49	26	45	15	B			Several dead branches
602	African sumac	<i>Searsia</i> sp.	55.5	174.27	22	30	20	B			Good health
603	Peruvian Pepper Tree	<i>Schinus molle</i>	49.6	155.74	7	35	25	C			Sapsuckers
604	Tasmanian Blue Gum	<i>Eucalyptus globulus</i>	57	178.98	2	60	20	B		X	Good health
605	Peruvian Pepper Tree	<i>Schinus molle</i>	5.3	16.64	1	18	6	C			Younger tree, improper pruning of branches
606	Peruvian Pepper Tree	<i>Schinus molle</i>	9	28.26	1	35	12	C			Broken branch in canopy



AMERICAN JEWISH UNIVERSITY, BRANDEIS BARDIN CAMPUS FACILITIES UPGRADE PROJECT

Results

Tree Tag No.	Common Name	Scientific Name	DBH (in)	Circumference (in)	Trunks/ Stems	Height (ft)	Dripline Diameter (ft)	Health	Protected Tree	Heritage Tree	Comments ¹
607	Peruvian Pepper Tree	<i>Schinus molle</i>	28.3	88.86	2	45	12	B			Good health, rubbing branches with adjacent eucalyptus
608	Tasmanian Blue Gum	<i>Eucalyptus globulus</i>	29.5	92.63	1	40	14	B		X	Good health, rubbing branches with adjacent pepper tree
609	Tasmanian Blue Gum	<i>Eucalyptus globulus</i>	49	153.86	1	55	25	C		X	Included bark
610	Aleppo Pine	<i>Pinus halepensis</i>	24.7	77.56	1	45	18	C			Large west facing branch needs to be trimmed to lighten load
611	Sycamore	<i>Platanus racemosa</i>	5.4	16.96	1	20	6	C	X		Leans to the east
612	Sycamore	<i>Platanus racemosa</i>	10.5	32.97	1	35	12	B	X		Good health



AMERICAN JEWISH UNIVERSITY, BRANDEIS BARDIN CAMPUS FACILITIES UPGRADE PROJECT

Results

Tree Tag No.	Common Name	Scientific Name	DBH (in)	Circumference (in)	Trunks/ Stems	Height (ft)	Dripline Diameter (ft)	Health	Protected Tree	Heritage Tree	Comments ¹
613	Sycamore	<i>Platanus racemosa</i>	15.1	47.41	1	40	12	C	X		Several dead branches
614	Sycamore	<i>Platanus racemosa</i>	10.6	33.28	1	40	12	C	X		Several dead branches
615	Sycamore	<i>Platanus racemosa</i>	5.8	18.21	1	30	8	C	X		Leans to the east
616	Peruvian Pepper Tree	<i>Schinus molle</i>	10	31.40	1	25	10	C			Leans to the north, roots have potential to lift asphalt
617	Sydney Blue Gum	<i>Eucalyptus saligna</i>	19	59.66	1	40	18	B			Leans to the east, roots have potential to lift asphalt
618	Tasmanian Blue Gum	<i>Eucalyptus globulus</i>	41.3	129.68	3	20	12	C		X	Canopy hitting power lines, some exposed roots



AMERICAN JEWISH UNIVERSITY, BRANDEIS BARDIN CAMPUS FACILITIES UPGRADE PROJECT

Results

Tree Tag No.	Common Name	Scientific Name	DBH (in)	Circumference (in)	Trunks/ Stems	Height (ft)	Dripline Diameter (ft)	Health	Protected Tree	Heritage Tree	Comments ¹
619	Peruvian Pepper Tree	<i>Schinus molle</i>	25.2	79.13	1	12	10	C			Sapsuckers, heavy lower canopy
620	Coast Live Oak	<i>Quercus agrifolia</i>	37.7	118.38	1	20	10	C	X	X	Trunk rot, exposed roots, canopy close to power lines
621	Peruvian Pepper Tree	<i>Schinus molle</i>	20.5	64.37	1	10	4	C			Broken branch in canopy
622	Peruvian Pepper Tree	<i>Schinus molle</i>	40.5	127.17	1	12	10	C		X	Sapsuckers, heavy lower canopy
623	Fan palm	<i>Washingtonia robusta</i>	10.6	33.28	1	8	2	B			Good health
624	Scrub Oak	<i>Quercus berberidifolia</i>	5.7	17.90	1	12	2	B	X		Good health



AMERICAN JEWISH UNIVERSITY, BRANDEIS BARDIN CAMPUS FACILITIES UPGRADE PROJECT

Results

Tree Tag No.	Common Name	Scientific Name	DBH (in)	Circumference (in)	Trunks/ Stems	Height (ft)	Dripline Diameter (ft)	Health	Protected Tree	Heritage Tree	Comments ¹
625	Scrub Oak	<i>Quercus berberidifolia</i>	5.4	16.96	1	13	2	B	X		Good health
626	Scrub Oak	<i>Quercus berberidifolia</i>	15	47.10	1	10	4	B	X		Good health
627	Scrub Oak	<i>Quercus berberidifolia</i>	1	3.14	1	6.5	1	B			Good health
628	Coast Live Oak	<i>Quercus agrifolia</i>	15.5	48.67	1	25	28	C	X		Minor trunk rot, dead branches in canopy
629	Coast Live Oak	<i>Quercus agrifolia</i>	6	18.84	1	15	6	C	X		Leaning off slope, at risk to fail as tree gets larger
630	Scrub Oak	<i>Quercus berberidifolia</i>	7.5	23.55	1	23	6	B	X		Good health



AMERICAN JEWISH UNIVERSITY, BRANDEIS BARDIN CAMPUS FACILITIES UPGRADE PROJECT

Results

Tree Tag No.	Common Name	Scientific Name	DBH (in)	Circumference (in)	Trunks/ Stems	Height (ft)	Dripline Diameter (ft)	Health	Protected Tree	Heritage Tree	Comments ¹
631	Scrub Oak	<i>Quercus berberidifolia</i>	2	6.28	1	7	2	B			Good health
632	Coast Live Oak	<i>Quercus agrifolia</i>	29.2	91.69	1	30	30	C	X	X	Some trunk rot, heavy lower branches
633	Coast Live Oak	<i>Quercus agrifolia</i>	14.5	45.53	1	12	40	D	X		Trunk rot, heavy lean, at risk to fail
634	Coast Live Oak	<i>Quercus agrifolia</i>	28.7	90.12	1	40	30	C	X	X	Included bark
635	Scrub Oak	<i>Quercus berberidifolia</i>	7.5	23.55	1	10	6	C	X		Good health
636	Peruvian Pepper Tree	<i>Schinus molle</i>	2.5	7.85	1	13	2	C			Younger tree



AMERICAN JEWISH UNIVERSITY, BRANDEIS BARDIN CAMPUS FACILITIES UPGRADE PROJECT

Results

Tree Tag No.	Common Name	Scientific Name	DBH (in)	Circumference (in)	Trunks/ Stems	Height (ft)	Dripline Diameter (ft)	Health	Protected Tree	Heritage Tree	Comments ¹
637	Peruvian Pepper Tree	<i>Schinus molle</i>	3	9.42	1	10	2	D			Younger tree, improper pruning of branches
638	Peruvian Pepper Tree	<i>Schinus molle</i>	4.7	14.76	1	14	2	D			Younger tree, improper pruning of branches
639	Scrub Oak	<i>Quercus berberidifolia</i>	6.5	20.41	1	13	2	B	X		Good health
640	Peruvian Pepper Tree	<i>Schinus molle</i>	18.4	57.78	1	15	12	C			Heavy lower canopy
641	Peruvian Pepper Tree	<i>Schinus molle</i>	51.3	161.08	1	40	40	C		X	Heavy lower canopy
642	Peruvian Pepper Tree	<i>Schinus molle</i>	8.9	27.95	1	15	4	D			Included bark



AMERICAN JEWISH UNIVERSITY, BRANDEIS BARDIN CAMPUS FACILITIES UPGRADE PROJECT

Results

Tree Tag No.	Common Name	Scientific Name	DBH (in)	Circumference (in)	Trunks/ Stems	Height (ft)	Dripline Diameter (ft)	Health	Protected Tree	Heritage Tree	Comments ¹
643	Coast Live Oak	<i>Quercus agrifolia</i>	23	72.22	1	21	30	D	X		Heavy lean towards sidewalk, sapsuckers
644	Scrub Oak	<i>Quercus berberidifolia</i>	3.5	10.99	1	10	2	C	X		Several dead branches, branches need pruning
645	Coast Live Oak	<i>Quercus agrifolia</i>	10.7	33.60	1	26	14	C	X		Heavy lower canopy
646	Fan palm	<i>Washingtonia robusta</i>	26.9	84.47	1	50	2	B			Good health, Upper tree close to power lines
647	Coast Live Oak	<i>Quercus agrifolia</i>	6	18.84	1	12	2	C	X		Included bark
648	Fan palm	<i>Washingtonia robusta</i>	27.5	86.35	1	55	2	B			Good health



AMERICAN JEWISH UNIVERSITY, BRANDEIS BARDIN CAMPUS FACILITIES UPGRADE PROJECT

Results

Tree Tag No.	Common Name	Scientific Name	DBH (in)	Circumference (in)	Trunks/ Stems	Height (ft)	Dripline Diameter (ft)	Health	Protected Tree	Heritage Tree	Comments ¹
649	Coast Live Oak	<i>Quercus agrifolia</i>	5.7	17.90	1	14	6	B	X		Good health
650	Alder	<i>Alnus</i> sp.	8.7	27.32	1	20	10	B			Good health
651	Coast Live Oak	<i>Quercus agrifolia</i>	22	69.08	1	25	40	C	X		Included bark
652	Scrub Oak	<i>Quercus berberidifolia</i>	2	6.28	1	7ft	2	B			Good health
653	Alnus sp.	<i>Alnus</i> sp.	9	28.26	1	11	6	B			Good health
654	Alnus sp.	<i>Alnus</i> sp.	3.6	11.30	1	12	6	B			Good health
655	Peruvian Pepper Tree	<i>Schinus molle</i>	1.5	4.71	1	9	2	C			Improperly pruned branches, young tree
656	Peruvian Pepper Tree	<i>Schinus molle</i>	27.8	87.29	1	30	35	C			Trunk rot, included bark



AMERICAN JEWISH UNIVERSITY, BRANDEIS BARDIN CAMPUS FACILITIES UPGRADE PROJECT

Results

Tree Tag No.	Common Name	Scientific Name	DBH (in)	Circumference (in)	Trunks/ Stems	Height (ft)	Dripline Diameter (ft)	Health	Protected Tree	Heritage Tree	Comments ¹
657	Peruvian Pepper Tree	<i>Schinus molle</i>	22.2	69.71	1	30	40	C			Trunk rot, included bark
658	Peruvian Pepper Tree	<i>Schinus molle</i>	12.7	39.88	1	22	10	C			Improperly pruned branches
659	Peruvian Pepper Tree	<i>Schinus molle</i>	14.5	45.53	1	11	6	B			Younger tree
701	Tasmanian Blue Gum	<i>Eucalyptus globulus</i>	34	106.76	1	60	30	C		X	Some dead branches in canopy, branches entangled with adjacent sycamore
702	Sycamore	<i>Platanus racemosa</i>	13	40.82	1	35	30	C	X		Tree has severe lean, at risk to fail
703	Sycamore	<i>Platanus racemosa</i>	25	78.50	1	34	42	D	X		Borers in trunk, mistletoe, sapsuckers



AMERICAN JEWISH UNIVERSITY, BRANDEIS BARDIN CAMPUS FACILITIES UPGRADE PROJECT

Results

Tree Tag No.	Common Name	Scientific Name	DBH (in)	Circumference (in)	Trunks/ Stems	Height (ft)	Dripline Diameter (ft)	Health	Protected Tree	Heritage Tree	Comments ¹
704	Coast Live Oak	<i>Quercus agrifolia</i>	8	25.12	1	18	24	D	X		Borers, trunk and branch rot
705	Tasmanian Blue Gum	<i>Eucalyptus globulus</i>	30	94.20	1	53	28	F		X	Mostly dead, included bark, borers
706	Peruvian Pepper Tree	<i>Schinus molle</i>	9	28.26	1	22	20	D			Exposed roots, rot in branches
707	Sydney Blue Gum	<i>Eucalyptus saligna</i>	24	75.36	1	75	42	B			Leaking sap, borers
708	Peruvian Pepper Tree	<i>Schinus molle</i>	10	31.40	1	14	18	C			Included bark, borers
709	Sydney Blue Gum	<i>Eucalyptus saligna</i>	4	12.56	1	22	12	B			Good health
710	Coast Live Oak	<i>Quercus agrifolia</i>	25.5	80.07	1	17	24	B	X		Sapsuckers, included bark



AMERICAN JEWISH UNIVERSITY, BRANDEIS BARDIN CAMPUS FACILITIES UPGRADE PROJECT

Results

Tree Tag No.	Common Name	Scientific Name	DBH (in)	Circumference (in)	Trunks/ Stems	Height (ft)	Dripline Diameter (ft)	Health	Protected Tree	Heritage Tree	Comments ¹
711	Coast Live Oak	<i>Quercus agrifolia</i>	20	62.80	1	15	24	B	X		Sapsuckers, included bark
712	Tasmanian Blue Gum	<i>Eucalyptus globulus</i>	54.5	171.13	1	75	50	D		X	Leaking sap, trunk rot, included bark
713	Sycamore	<i>Platanus racemosa</i>	5.5	17.27	1	27	16	C	X		Old wound at base
714	Sycamore	<i>Platanus racemosa</i>	10	31.40	1	44	40	C	X		Borers
715	Sycamore	<i>Platanus racemosa</i>	22.25	69.87	1	65	42	C	X		Mistletoe, included bark, codominant leaders
716	Sycamore	<i>Platanus racemosa</i>	20	62.80	1	70	48	C	X		Mistletoe, borers



AMERICAN JEWISH UNIVERSITY, BRANDEIS BARDIN CAMPUS FACILITIES UPGRADE PROJECT

Results

Tree Tag No.	Common Name	Scientific Name	DBH (in)	Circumference (in)	Trunks/ Stems	Height (ft)	Dripline Diameter (ft)	Health	Protected Tree	Heritage Tree	Comments ¹
717	Sycamore	<i>Platanus racemosa</i>	20.25	63.59	1	48	48	D	X		Mistletoe, sapsuckers
718	Sycamore	<i>Platanus racemosa</i>	11.5	36.11	1	45	32	A	X		Good health
719	Sydney Blue Gum	<i>Eucalyptus saligna</i>	9.5	29.83	1	38	24	C			Sapsuckers, leaking sap
720	Peruvian Pepper Tree	<i>Schinus molle</i>	42.5	133.45	1	44	60	B		X	Sapsuckers
721	Sydney Blue Gum	<i>Eucalyptus saligna</i>	63.75	200.18	1	92	76	D		X	Roots lifting road, trunk rot, included bark
722	Sycamore	<i>Platanus racemosa</i>	18	56.52	1	60	40	B	X		Mistletoe



AMERICAN JEWISH UNIVERSITY, BRANDEIS BARDIN CAMPUS FACILITIES UPGRADE PROJECT

Results

Tree Tag No.	Common Name	Scientific Name	DBH (in)	Circumference (in)	Trunks/ Stems	Height (ft)	Dripline Diameter (ft)	Health	Protected Tree	Heritage Tree	Comments ¹
723	Sycamore	<i>Platanus racemosa</i>	28	87.92	1	45	60	C	X		Mistletoe, included bark, sapsuckers
724	Sycamore	<i>Platanus racemosa</i>	18.5	58.09	1	50	50	C	X		Mistletoe
725	Sycamore	<i>Platanus racemosa</i>	20.5	64.37	1	38	40	C	X		Mistletoe, trunk rot, borers
726	Sydney Blue Gum	<i>Eucalyptus saligna</i>	37.75	118.54	1	58	72	C		X	Leaking sap, borers
727	Sycamore	<i>Platanus racemosa</i>	4.5	14.13	1	15	12	B	X		Good health
728	Sycamore	<i>Platanus racemosa</i>	5.5	17.27	1	24	14	C	X		Borers
729	River Red Gum	<i>Eucalyptus camaldulensis</i>	35	109.90	1	56	80	D		X	Borers, included bark, leaning to east



AMERICAN JEWISH UNIVERSITY, BRANDEIS BARDIN CAMPUS FACILITIES UPGRADE PROJECT

Results

Tree Tag No.	Common Name	Scientific Name	DBH (in)	Circumference (in)	Trunks/ Stems	Height (ft)	Dripline Diameter (ft)	Health	Protected Tree	Heritage Tree	Comments ¹
730	Peruvian Pepper Tree	<i>Schinus molle</i>	9	28.26	1	10	16	D			Trunk rot, twisted trunk
731	Aleppo Pine	<i>Pinus halepensis</i>	13	40.82	1	18	30	C			Large broken branch, leans to east
732	Aleppo Pine	<i>Pinus halepensis</i>	11.5	36.11	1	35	60	B			Severe lean to east, at risk to fail
733	Italian Cypress	<i>Cupressus sempervirens</i>	2.5	7.85	1	12	1	F			Dieback from top
734	Aleppo Pine	<i>Pinus halepensis</i>	15	47.10	1	40	36	D			Included bark, codominant leaders
735	Italian Cypress	<i>Cupressus sempervirens</i>	4.5	14.13	1	20	2	B			Top of tree tangled with adjacent pine
736	Aleppo Pine	<i>Pinus halepensis</i>	11.25	35.33	1	50	24	C			Very few branches on south side of tree



AMERICAN JEWISH UNIVERSITY, BRANDEIS BARDIN CAMPUS FACILITIES UPGRADE PROJECT

Results

Tree Tag No.	Common Name	Scientific Name	DBH (in)	Circumference (in)	Trunks/ Stems	Height (ft)	Dripline Diameter (ft)	Health	Protected Tree	Heritage Tree	Comments ¹
737	Aleppo Pine	<i>Pinus halepensis</i>	27.25	85.57	1	54	30	C			Included bark, weak spot in trunk
738	Aleppo Pine	<i>Pinus halepensis</i>	12.25	38.47	1	61	30	C			Very few branches on north side of tree
739	Aleppo Pine	<i>Pinus halepensis</i>	6.5	20.41	1	15	18	D			Borers, weak trunk, leans
740	Aleppo Pine	<i>Pinus halepensis</i>	11.25	35.33	1	18	30	D			Leans south, at risk to fail
741	Italian Cypress	<i>Cupressus sempervirens</i>	3.5	10.99	1	10	1	C			Good health
742	Italian Cypress	<i>Cupressus sempervirens</i>	3	9.42	1	16	2	C			Top tangled with adjacent pine
743	Aleppo Pine	<i>Pinus halepensis</i>	11.25	35.33	1	38	30	C			Many dead branches in understory



AMERICAN JEWISH UNIVERSITY, BRANDEIS BARDIN CAMPUS FACILITIES UPGRADE PROJECT

Results

Tree Tag No.	Common Name	Scientific Name	DBH (in)	Circumference (in)	Trunks/ Stems	Height (ft)	Dripline Diameter (ft)	Health	Protected Tree	Heritage Tree	Comments ¹
744	Italian Cypress	<i>Cupressus sempervirens</i>	2.5	7.85	1	18	1	C			Good health
745	Italian Cypress	<i>Cupressus sempervirens</i>	2	6.28	1	13	1	C			Good health
746	Coast Live Oak	<i>Quercus agrifolia</i>	80.5	252.77	1	32	82	D	X	X	Galls, major borers, not throughout
747	Italian Cypress	<i>Cupressus sempervirens</i>	6	18.84	1	35	2	C			Good health
748	Stone Pine	<i>Pinus pinea</i>	25.5	80.07	1	43	66	C			Leans south
749	Canary Island Pine	<i>Pinus canariensis</i>	11.5	36.11	1	52	30	B			Good health
750	Italian Cypress	<i>Cupressus sempervirens</i>	6.5	20.41	1	28	2	C			Good health



AMERICAN JEWISH UNIVERSITY, BRANDEIS BARDIN CAMPUS FACILITIES UPGRADE PROJECT

Results

Tree Tag No.	Common Name	Scientific Name	DBH (in)	Circumference (in)	Trunks/ Stems	Height (ft)	Dripline Diameter (ft)	Health	Protected Tree	Heritage Tree	Comments ¹
751	Stone Pine	<i>Pinus pinea</i>	21.5	67.51	1	40	42	C			Leans north, at risk to fail
752	Stone Pine	<i>Pinus pinea</i>	27.25	85.57	1	56	60	B			Good health
753	Deodar Cedar	<i>Cedrus deodara</i>	18	56.52	1	26	18	C			Included bark
754	Aleppo Pine	<i>Pinus halepensis</i>	12.5	39.25	1	52	36	C			Leans north, at risk to fail
755	Stone Pine	<i>Pinus pinea</i>	20.25	63.59	1	54	52	C			Broken branch in canopy
756	Stone Pine	<i>Pinus pinea</i>	19	59.66	1	53	60	C			Good health
757	Deodar Cedar	<i>Cedrus deodara</i>	8.75	27.48	1	26	14	F			Mostly dead



AMERICAN JEWISH UNIVERSITY, BRANDEIS BARDIN CAMPUS FACILITIES UPGRADE PROJECT

Results

Tree Tag No.	Common Name	Scientific Name	DBH (in)	Circumference (in)	Trunks/ Stems	Height (ft)	Dripline Diameter (ft)	Health	Protected Tree	Heritage Tree	Comments ¹
758	Aleppo Pine	<i>Pinus halepensis</i>	18.25	57.31	1	61	48	C			Included bark, codominant leader
759	Aleppo Pine	<i>Pinus halepensis</i>	15.75	49.46	1	54	60	C			Good health
760	Canary Island Pine	<i>Pinus canariensis</i>	9.75	30.62	1	58	30	C			Good health
761	Aleppo Pine	<i>Pinus halepensis</i>	17	53.38	1	58	30	C			Broken leader
762	Aleppo Pine	<i>Pinus halepensis</i>	6.5	20.41	1	36	24	C			Leans east, at risk to fail
763	Sydney Blue Gum	<i>Eucalyptus saligna</i>	53.75	168.78	1	68	88	C		X	Borers, leaking sap
764	Aleppo Pine	<i>Pinus halepensis</i>	7.5	23.55	1	40	16	C			Good health



AMERICAN JEWISH UNIVERSITY, BRANDEIS BARDIN CAMPUS FACILITIES UPGRADE PROJECT

Results

Tree Tag No.	Common Name	Scientific Name	DBH (in)	Circumference (in)	Trunks/ Stems	Height (ft)	Dripline Diameter (ft)	Health	Protected Tree	Heritage Tree	Comments ¹
765	Aleppo Pine	<i>Pinus halepensis</i>	7.5	23.55	1	23	28	C			Leans south, no branches on north side
766	Aleppo Pine	<i>Pinus halepensis</i>	30.25	94.99	1	35	50	C		X	Leans east, at risk to fail, included bark
767	Aleppo Pine	<i>Pinus halepensis</i>	12.5	39.25	1	43	30	C			Leans south
768	Aleppo Pine	<i>Pinus halepensis</i>	19.5	61.23	1	35	60	C			Leans east
769	Canary Island Pine	<i>Pinus canariensis</i>	20	62.80	1	76	44	C			Good health
770	Aleppo Pine	<i>Pinus halepensis</i>	10.5	32.97	1	34	42	C			Good health



AMERICAN JEWISH UNIVERSITY, BRANDEIS BARDIN CAMPUS FACILITIES UPGRADE PROJECT

Results

Tree Tag No.	Common Name	Scientific Name	DBH (in)	Circumference (in)	Trunks/ Stems	Height (ft)	Dripline Diameter (ft)	Health	Protected Tree	Heritage Tree	Comments ¹
771	Aleppo Pine	<i>Pinus halepensis</i>	25.5	80.07	1	24	44	D			Leans east, at risk to fail, borers
772	Peruvian Pepper Tree	<i>Schinus molle</i>	25.5	80.07	1	22	48	D			Included bark, borers
773	Aleppo Pine	<i>Pinus halepensis</i>	11	34.54	1	43	16	B			Good health
774	Aleppo Pine	<i>Pinus halepensis</i>	12.25	38.47	1	52	24	D			Borers, trunk rot, included bark
775	Coast Live Oak	<i>Quercus agrifolia</i>	10	31.40	1	12	14	D	X		Borers, basal rot
776	Aleppo Pine	<i>Pinus halepensis</i>	15.5	48.67	1	15	36	D			Leans south
777	Canary Island Pine	<i>Pinus canariensis</i>	12.5	39.25	1	55	28	C			Good health



AMERICAN JEWISH UNIVERSITY, BRANDEIS BARDIN CAMPUS FACILITIES UPGRADE PROJECT

Results

Tree Tag No.	Common Name	Scientific Name	DBH (in)	Circumference (in)	Trunks/ Stems	Height (ft)	Dripline Diameter (ft)	Health	Protected Tree	Heritage Tree	Comments ¹
778	Deodar Cedar	<i>Cedrus deodara</i>	25.25	79.29	1	30	30	D			Borers, trunk rot
779	Canary Island Pine	<i>Pinus canariensis</i>	12.25	38.47	1	58	26	C			Good health
780	Aleppo Pine	<i>Pinus halepensis</i>	13.5	42.39	1	18	30	C			Leans south, at risk to fail
781	Canary Island Pine	<i>Pinus canariensis</i>	11.5	36.11	1	40	32	D			Basal rot
782	Aleppo Pine	<i>Pinus halepensis</i>	11	34.54	1	32	28	C			Leans south, at risk to fail
783	Aleppo Pine	<i>Pinus halepensis</i>	14	43.96	1	36	26	C			Few branches on north side
784	Aleppo Pine	<i>Pinus halepensis</i>	20.25	63.59	1	36	38	D			Trunk rot



AMERICAN JEWISH UNIVERSITY, BRANDEIS BARDIN CAMPUS FACILITIES UPGRADE PROJECT

Results

Tree Tag No.	Common Name	Scientific Name	DBH (in)	Circumference (in)	Trunks/ Stems	Height (ft)	Dripline Diameter (ft)	Health	Protected Tree	Heritage Tree	Comments ¹
785	Aleppo Pine	<i>Pinus halepensis</i>	15.75	49.46	1	36	66	D			Basal trunk rot, leans south
786	Deodar Cedar	<i>Cedrus deodara</i>	6.5	20.41	1	24	12	C			Wound in trunk, die back
787	Coast Live Oak	<i>Quercus agrifolia</i>	13	40.82	1	10	20	D	X		Borers, included bark
788	Peruvian Pepper Tree	<i>Schinus molle</i>	13.75	43.18	1	22	26	C			Included bark, borers
789	Peruvian Pepper Tree	<i>Schinus molle</i>	30	94.20	1	30	56	C		X	Included bark, borers
790	Aleppo Pine	<i>Pinus halepensis</i>	10.5	32.97	1	16	22	C			Topped, borers
791	Aleppo Pine	<i>Pinus halepensis</i>	7.75	24.34	1	26	14	C			Good health



AMERICAN JEWISH UNIVERSITY, BRANDEIS BARDIN CAMPUS FACILITIES UPGRADE PROJECT

Results

Tree Tag No.	Common Name	Scientific Name	DBH (in)	Circumference (in)	Trunks/ Stems	Height (ft)	Dripline Diameter (ft)	Health	Protected Tree	Heritage Tree	Comments ¹
792	Canary Island Pine	<i>Pinus canariensis</i>	13.5	42.39	1	26	40	C			Topped for powerline
793	Peruvian Pepper Tree	<i>Schinus molle</i>	21.25	66.73	1	33	28	D			Included bark, girdling roots, borer
794	Aleppo Pine	<i>Pinus halepensis</i>	16.5	51.81	1	33	36	C			Trimmed away from lines
795	Aleppo Pine	<i>Pinus halepensis</i>	13.75	43.18	1	35	28	C			Good health
796	Peruvian Pepper Tree	<i>Schinus molle</i>	4.75	14.92	1	9	16	C			Sapsuckers
797	Peruvian Pepper Tree	<i>Schinus molle</i>	25	78.50	1	22	40	D			Trunk rot, borers, leans south
798	Sycamore	<i>Platanus racemosa</i>	5.5	17.27	1	18	16	C	X		Good health



AMERICAN JEWISH UNIVERSITY, BRANDEIS BARDIN CAMPUS FACILITIES UPGRADE PROJECT

Results

Tree Tag No.	Common Name	Scientific Name	DBH (in)	Circumference (in)	Trunks/ Stems	Height (ft)	Dripline Diameter (ft)	Health	Protected Tree	Heritage Tree	Comments ¹
799	Sycamore	<i>Platanus racemosa</i>	2.5	7.85	1	11	12	C			Leans west
800	Sycamore	<i>Platanus racemosa</i>	22	69.08	1	43	52	D	X		Trunk rot, borers
801	Liquidambar	<i>Liquidambar styraciflua</i>	14.5	45.53	1	22	32	D			Sapsuckers, topped
802	Maple	<i>Acer</i> sp.	24.25	76.15	1	32	46	F			Leaking sap, mostly dead
803	Arizona Ash	<i>Fraxinus velutina</i>	26.75	84.00	1	32	30	D			Too close to building foundation
804	Liquidambar	<i>Liquidambar styraciflua</i>	10.5	32.97	1	15	16	D			Sapsuckers, topped
805	Sycamore	<i>Platanus racemosa</i>	17.25	54.17	1	47	28	D	X		Mistletoe, branch rot



AMERICAN JEWISH UNIVERSITY, BRANDEIS BARDIN CAMPUS FACILITIES UPGRADE PROJECT

Results

Tree Tag No.	Common Name	Scientific Name	DBH (in)	Circumference (in)	Trunks/ Stems	Height (ft)	Dripline Diameter (ft)	Health	Protected Tree	Heritage Tree	Comments ¹
806	Sycamore	<i>Platanus racemosa</i>	29	91.06	1	48	84	D	X	X	Mistletoe, borers
807	Coast Live Oak	<i>Quercus agrifolia</i>	8.75	27.48	1	20	16	C	X		Sapsuckers
808	Sycamore	<i>Platanus racemosa</i>	76.25	239.43	1	82	82	D	X	X	Torsion wood on branch overlook, may rot, included bark
809	Sycamore	<i>Platanus racemosa</i>	37	116.18	1	69	46	C	X	X	Torsion wood and rot throughout tree
810	Sycamore	<i>Platanus racemosa</i>	18	56.52	1	36	32	D	X		Branches improperly pruned
811	Sycamore	<i>Platanus racemosa</i>	32	100.48	1	51	76	D	X	X	Mistletoe, trunk rot, borers



AMERICAN JEWISH UNIVERSITY, BRANDEIS BARDIN CAMPUS FACILITIES UPGRADE PROJECT

Results

Tree Tag No.	Common Name	Scientific Name	DBH (in)	Circumference (in)	Trunks/ Stems	Height (ft)	Dripline Diameter (ft)	Health	Protected Tree	Heritage Tree	Comments ¹
812	Sycamore	<i>Platanus racemosa</i>	5.5	17.27	1	25	18	B	X		Good health, roots raise pavement
813	Sycamore	<i>Platanus racemosa</i>	5	15.70	1	24	20	B	X		Good health, roots raise sidewalk
814	Sycamore	<i>Platanus racemosa</i>	5.5	17.27	1	25	24	C	X		Mistletoe roots lift, included bark
815	Sycamore	<i>Platanus racemosa</i>	5.25	16.49	1	24	24	B	X		Reeling branches
816	Sycamore	<i>Platanus racemosa</i>	6.75	21.20	1	27	34	B	X		Sapsuckers, included bark
817	Sycamore	<i>Platanus racemosa</i>	6.5	20.41	1	28	28	B	X		Rubbing branches
818	Sycamore	<i>Platanus racemosa</i>	5	15.70	1	20	16	B	X		Rubbing branches



AMERICAN JEWISH UNIVERSITY, BRANDEIS BARDIN CAMPUS FACILITIES UPGRADE PROJECT

Results

Tree Tag No.	Common Name	Scientific Name	DBH (in)	Circumference (in)	Trunks/ Stems	Height (ft)	Dripline Diameter (ft)	Health	Protected Tree	Heritage Tree	Comments ¹
819	Sycamore	<i>Platanus racemosa</i>	6.5	20.41	1	22	16	B	X		Rubbing branches
820	Sycamore	<i>Platanus racemosa</i>	4.25	13.35	1	19	18	B	X		Roots likely to lift sidewalk over time
821	Sycamore	<i>Platanus racemosa</i>	6.25	19.63	1	31	24	B	X		Roots likely to lift sidewalk over time
822	Sycamore	<i>Platanus racemosa</i>	5	15.70	1	27	22	B	X		Roots likely to lift sidewalk over time
823	Sycamore	<i>Platanus racemosa</i>	5.75	18.06	1	29	26	B	X		Roots likely to lift sidewalk over time
824	Sycamore	<i>Platanus racemosa</i>	5.75	18.06	1	29	22	C	X		Exposed roots
825	Sycamore	<i>Platanus racemosa</i>	8.5	26.69	1	34	30	C	X		Exposed roots



AMERICAN JEWISH UNIVERSITY, BRANDEIS BARDIN CAMPUS FACILITIES UPGRADE PROJECT

Results

Tree Tag No.	Common Name	Scientific Name	DBH (in)	Circumference (in)	Trunks/ Stems	Height (ft)	Dripline Diameter (ft)	Health	Protected Tree	Heritage Tree	Comments ¹
826	Sycamore	<i>Platanus racemosa</i>	6.75	21.20	1	29	20	D	X		Mistletoe
827	Sycamore	<i>Platanus racemosa</i>	6.25	19.63	1	28	28	C	X		Codominant leader
828	Sycamore	<i>Platanus racemosa</i>	6.75	21.20	1	27	18	C	X		Good health
829	Sycamore	<i>Platanus racemosa</i>	6	18.84	1	26	20	C	X		Good health
830	Coast Live Oak	<i>Quercus agrifolia</i>	35	109.90	1	33	86	D	X	X	Borers, trunk rot
831	Coast Live Oak	<i>Quercus agrifolia</i>	60	188.40	1	37	102	D	X	X	Borers, trunk and branch rot
832	Coast Live Oak	<i>Quercus agrifolia</i>	26.25	82.43	1	16	74	F	X		Trunk rot, borers, leader broke



AMERICAN JEWISH UNIVERSITY, BRANDEIS BARDIN CAMPUS FACILITIES UPGRADE PROJECT

Results

Tree Tag No.	Common Name	Scientific Name	DBH (in)	Circumference (in)	Trunks/ Stems	Height (ft)	Dripline Diameter (ft)	Health	Protected Tree	Heritage Tree	Comments ¹
833	Coast Live Oak	<i>Quercus agrifolia</i>	2.5	7.85	1	11	26	C	X		Scales
834	Coast Live Oak	<i>Quercus agrifolia</i>	4.5	14.13	1	9	24	C	X		Scales, galls
835	Sycamore	<i>Platanus racemosa</i>	26.25	82.43	1	45	60	F	X		Trunk rot, borers, will fail
837	Sycamore	<i>Platanus racemosa</i>	11.5	36.11	1	22	36	C	X		Borers, leans south
838	Sycamore	<i>Platanus racemosa</i>	9.5	29.83	1	18	46	C	X		Leans south, borers
839	Sycamore	<i>Platanus racemosa</i>	14	43.96	1	52	44	C	X		Leans south, borers
839	Sycamore	<i>Platanus racemosa</i>	93.5	293.59	1	59	90	D	X	X	Leans south, north and west, borers



AMERICAN JEWISH UNIVERSITY, BRANDEIS BARDIN CAMPUS FACILITIES UPGRADE PROJECT

Results

Tree Tag No.	Common Name	Scientific Name	DBH (in)	Circumference (in)	Trunks/ Stems	Height (ft)	Dripline Diameter (ft)	Health	Protected Tree	Heritage Tree	Comments ¹
840	Sycamore	<i>Platanus racemosa</i>	9.75	30.62	1	30	20	C	X		Leans south
841	Sycamore	<i>Platanus racemosa</i>	7.75	24.34	1	33	16	C	X		Good health
842	Sycamore	<i>Platanus racemosa</i>	32.25	101.27	1	75	50	C	X	X	Borers
843	Sycamore	<i>Platanus racemosa</i>	32.75	102.84	1	70	56	D	X	X	Borers, basal rot
844	Coast Live Oak	<i>Quercus agrifolia</i>	7.5	23.55	1	18	28	B	X		Good health
845	Coast Live Oak	<i>Quercus agrifolia</i>	58	182.12	1	30	82	D	X	X	Borers, trunk rot, included bark
846	Coast Live Oak	<i>Quercus agrifolia</i>	96	301.44	1	48	130	D	X	X	Borers, included bark, split branch



AMERICAN JEWISH UNIVERSITY, BRANDEIS BARDIN CAMPUS FACILITIES UPGRADE PROJECT

Results

Tree Tag No.	Common Name	Scientific Name	DBH (in)	Circumference (in)	Trunks/ Stems	Height (ft)	Dripline Diameter (ft)	Health	Protected Tree	Heritage Tree	Comments ¹
847	Coast Live Oak	<i>Quercus agrifolia</i>	16.25	51.03	1	24	40	C	X		Included bark, sapsuckers
848	Coast Live Oak	<i>Quercus agrifolia</i>	5	15.70	1	22	40	C	X		Leans north, sapsuckers
849	Coast Live Oak	<i>Quercus agrifolia</i>	19.25	60.45	1	24	44	C	X		Included bark, sapsuckers
850	Coast Live Oak	<i>Quercus agrifolia</i>	16	50.24	1	17	66	D	X		Trunk rot, leans south
851	Coast Live Oak	<i>Quercus agrifolia</i>	40	125.60	1	33	96	D	X	X	Included bark, borers, leans south, basal rot
852	Coast Live Oak	<i>Quercus agrifolia</i>	34.5	108.33	1	55	116	D	X	X	Main trunk broke and rotted, sapsuckers.
853	Aleppo Pine	<i>Pinus halepensis</i>	16.5	51.81	1	53	38	C			Several broken branches in crown



AMERICAN JEWISH UNIVERSITY, BRANDEIS BARDIN CAMPUS FACILITIES UPGRADE PROJECT

Results

Tree Tag No.	Common Name	Scientific Name	DBH (in)	Circumference (in)	Trunks/ Stems	Height (ft)	Dripline Diameter (ft)	Health	Protected Tree	Heritage Tree	Comments ¹
854	Aleppo Pine	<i>Pinus halepensis</i>	13.75	43.18	1	56	40	C			Dead branches throughout crown
855	Aleppo Pine	<i>Pinus halepensis</i>	19	59.66	1	50	46	C			Good health
856	Peruvian Pepper Tree	<i>Schinus molle</i>	31.5	98.91	1	50	60	D		X	Trunk rot, borers, included bark
857	Sycamore	<i>Platanus racemosa</i>	18.25	57.31	1	39	60	D	X		Borers, leans south
858	Sycamore	<i>Platanus racemosa</i>	23	72.22	1	79	80	D	X		Borers, leans north
859	Sycamore	<i>Platanus racemosa</i>	13.5	42.39	1	39	30	D	X		Borers, root rot, leans north
860	Sycamore	<i>Platanus racemosa</i>	19.5	61.23	1	64	36	D	X		Borers, branch and root rot, mistletoe



AMERICAN JEWISH UNIVERSITY, BRANDEIS BARDIN CAMPUS FACILITIES UPGRADE PROJECT

Results

Tree Tag No.	Common Name	Scientific Name	DBH (in)	Circumference (in)	Trunks/ Stems	Height (ft)	Dripline Diameter (ft)	Health	Protected Tree	Heritage Tree	Comments ¹
861	Sycamore	<i>Platanus racemosa</i>	66.5	208.81	1	88	66	F	X	X	Borers, basal rot, trunk rot
862	Sycamore	<i>Platanus racemosa</i>	13.25	41.61	1	68	52	D	X		Borers, leans west
863	Sycamore	<i>Platanus racemosa</i>	44.5	139.73	1	89	72	D	X	X	Borers, trunk rot, mistletoe
864	Sycamore	<i>Platanus racemosa</i>	68.25	214.31	1	77	102	D	X	X	Borers, mistletoe, basal rot
865	Coast Live Oak	<i>Quercus agrifolia</i>	38.5	120.89	1	38	70	D	X	X	Borers, branch rot
866	Peruvian Pepper Tree	<i>Schinus molle</i>	6.75	21.20	1	28	24	C			Leans west
867	Fan palm	<i>Washingtonia robusta</i>	17	53.38	1	42	14	B			Good health



AMERICAN JEWISH UNIVERSITY, BRANDEIS BARDIN CAMPUS FACILITIES UPGRADE PROJECT

Results

Tree Tag No.	Common Name	Scientific Name	DBH (in)	Circumference (in)	Trunks/ Stems	Height (ft)	Dripline Diameter (ft)	Health	Protected Tree	Heritage Tree	Comments ¹
868	Fan palm	<i>Washingtonia robusta</i>	18.25	57.31	1	42	14	B			Good health
869	Fan palm	<i>Washingtonia robusta</i>	15.25	47.89	1	35	14	B			Good health
870	Sycamore	<i>Platanus racemosa</i>	19.5	61.23	1	80	70	D	X		Mistletoe, trunk rot
871	Sycamore	<i>Platanus racemosa</i>	20.25	63.59	1	88	70	D	X		Mistletoe, trunk rot
872	Sycamore	<i>Platanus racemosa</i>	21	65.94	1	82	96	D	X		Mistletoe, trunk rot
873	Sycamore	<i>Platanus racemosa</i>	23.5	73.79	1	82	82	D	X		Mistletoe, branch and trunk rot
874	Peruvian Pepper Tree	<i>Schinus molle</i>	22	69.08	1	34	44	C			Borers, included bark



AMERICAN JEWISH UNIVERSITY, BRANDEIS BARDIN CAMPUS FACILITIES UPGRADE PROJECT

Results

Tree Tag No.	Common Name	Scientific Name	DBH (in)	Circumference (in)	Trunks/ Stems	Height (ft)	Dripline Diameter (ft)	Health	Protected Tree	Heritage Tree	Comments ¹
875	Liquidambar	<i>Liquidambar styraciflua</i>	6.5	20.41	1	38	18	C			Sapsuckers
876	Coast Live Oak	<i>Quercus agrifolia</i>	30.25	94.99	1	39	72	D	X	X	Borers, included bark, branch and trunk rot
877	Sycamore	<i>Platanus racemosa</i>	32.75	102.84	1	35	86	F	X	X	Borers, can in trunk mistletoe?
878	Coast Live Oak	<i>Quercus agrifolia</i>	16	50.24	1	19	18	C	X		Sapsuckers, included bark
879	Peruvian Pepper Tree	<i>Schinus molle</i>	7.5	23.55	1	15	22	C			Included bark
880	Coast Live Oak	<i>Quercus agrifolia</i>	30	94.20	1	39	40	D	X	X	Basal rot, borers, basal rot



AMERICAN JEWISH UNIVERSITY, BRANDEIS BARDIN CAMPUS FACILITIES UPGRADE PROJECT

Results

Tree Tag No.	Common Name	Scientific Name	DBH (in)	Circumference (in)	Trunks/ Stems	Height (ft)	Dripline Diameter (ft)	Health	Protected Tree	Heritage Tree	Comments ¹
881	Apple (cultivated)	<i>Malus</i> sp.	9.5	29.83	1	10	12	C			Branches rubbing
882	Peruvian Pepper Tree	<i>Schinus molle</i>	39	122.46	1	44	60	D		X	Sapsuckers, borers, trunk rot
883	Liquidambar	<i>Liquidambar styraciflua</i>	13.5	42.39	1	44	26	C			Included bark, codominant leader
884	Liquidambar	<i>Liquidambar styraciflua</i>	9.75	30.62	1	37	18	D			Dead branches throughout tree
885	Liquidambar	<i>Liquidambar styraciflua</i>	12.5	39.25	1	36	40	C			Included bark, codominant leader,
886	Liquidambar	<i>Liquidambar styraciflua</i>	20.75	65.16	1	37	42	D			Included bark, codominant leader,
887	Mulberry	<i>Morus</i> sp.	61.5	193.11	1	27	26	D		X	Previously topped, trunk rot



AMERICAN JEWISH UNIVERSITY, BRANDEIS BARDIN CAMPUS FACILITIES UPGRADE PROJECT

Results

Tree Tag No.	Common Name	Scientific Name	DBH (in)	Circumference (in)	Trunks/ Stems	Height (ft)	Dripline Diameter (ft)	Health	Protected Tree	Heritage Tree	Comments ¹
888	Sycamore	<i>Platanus racemosa</i>	25.5	80.07	1	74	94	D	X		Mistletoe, main branch rot
889	Sycamore	<i>Platanus racemosa</i>	25.5	80.07	1	65	68	D	X		Rot in main branches and trunk, borers
890	Sycamore	<i>Platanus racemosa</i>	23	72.22	1	65	104	D	X		Branch and trunk rot, borers, mistletoe
891	Sycamore	<i>Platanus racemosa</i>	34	106.76	1	70	50	F	X	X	Borers, major rot throughout tree
892	Sycamore	<i>Platanus racemosa</i>	21	65.94	1	66	92	D	X		Borers, branch and trunk rot
893	Sycamore	<i>Platanus racemosa</i>	2.25	7.07	1	13	12	D			Weed eater damage
894	Sycamore	<i>Platanus racemosa</i>	7.75	24.34	1	19	26	C	X		Leans east



AMERICAN JEWISH UNIVERSITY, BRANDEIS BARDIN CAMPUS FACILITIES UPGRADE PROJECT

Results

Tree Tag No.	Common Name	Scientific Name	DBH (in)	Circumference (in)	Trunks/ Stems	Height (ft)	Dripline Diameter (ft)	Health	Protected Tree	Heritage Tree	Comments ¹
895	Sycamore	<i>Platanus racemosa</i>	5.25	16.49	1	20	30	D	X		Mower damage at base
896	Sycamore	<i>Platanus racemosa</i>	3	9.42	1	16	24	D	X		Weed eater damage
897	Sycamore	<i>Platanus racemosa</i>	25.5	80.07	1	60	62	F	X		Trunk and branch rot, mistletoe
898	Sycamore	<i>Platanus racemosa</i>	29.5	92.63	1	48	40	D	X	X	Leans south, borers
899	Peruvian Pepper Tree	<i>Schinus molle</i>	25.5	80.07	1	26	60	D			Included bark, borers
900	Peruvian Pepper Tree	<i>Schinus molle</i>	18.5	58.09	1	41	60	D			Borers, trunk rot
901	Canary Island Date	<i>Phoenix canariensis</i>	16	50.24	1	13	28	C			Good health



AMERICAN JEWISH UNIVERSITY, BRANDEIS BARDIN CAMPUS FACILITIES UPGRADE PROJECT

Results

Tree Tag No.	Common Name	Scientific Name	DBH (in)	Circumference (in)	Trunks/ Stems	Height (ft)	Dripline Diameter (ft)	Health	Protected Tree	Heritage Tree	Comments ¹
902	Sycamore	<i>Platanus racemosa</i>	31	97.34	1	34	52	F	X	X	Trunk rot
903	Coast Live Oak	<i>Quercus agrifolia</i>	11	34.54	1	18	32	C	X		Included bark
904	Sycamore	<i>Platanus racemosa</i>	5.25	16.49	1	18	16	C	X		Leans south
905	Sycamore	<i>Platanus racemosa</i>	28.5	89.49	1	45	54	F	X		Trunk rot, mistletoe, borers
906	Peruvian Pepper Tree	<i>Schinus molle</i>	24.75	77.72	1	20	50	D			Included bark, trunk rot, borers
907	Coast Live Oak	<i>Quercus agrifolia</i>	34	106.76	1	36	90	D	X	X	Borers, included bark, branch rot



AMERICAN JEWISH UNIVERSITY, BRANDEIS BARDIN CAMPUS FACILITIES UPGRADE PROJECT

Results

Tree Tag No.	Common Name	Scientific Name	DBH (in)	Circumference (in)	Trunks/ Stems	Height (ft)	Dripline Diameter (ft)	Health	Protected Tree	Heritage Tree	Comments ¹
908	Peruvian Pepper Tree	<i>Schinus molle</i>	21	65.94	1	31	36	D			Included bark, branch rot and trunk rot, borers
909	Coast Live Oak	<i>Quercus agrifolia</i>	14	43.96	1	20	28	F	X		Borers, trunk rot, included bark
910	Coast Live Oak	<i>Quercus agrifolia</i>	36.25	113.83	1	18	26	F	X	X	Borers, trunk and branch rot, root rot
911	Coast Live Oak	<i>Quercus agrifolia</i>	27.5	86.35	1	20	60	D	X		Borers, branch rot, trunk rot
912	Coast Live Oak	<i>Quercus agrifolia</i>	19	59.66	1	32	50	F	X		Borers, branch rot, dieback
913	Coast Live Oak	<i>Quercus agrifolia</i>	13.5	42.39	1	25	24	F	X		Borers, basal rot, die back



AMERICAN JEWISH UNIVERSITY, BRANDEIS BARDIN CAMPUS FACILITIES UPGRADE PROJECT

Results

Tree Tag No.	Common Name	Scientific Name	DBH (in)	Circumference (in)	Trunks/ Stems	Height (ft)	Dripline Diameter (ft)	Health	Protected Tree	Heritage Tree	Comments ¹
914	Aleppo Pine	<i>Pinus halepensis</i>	7.25	22.77	1	33	24	B			Leans south
915	Coast Live Oak	<i>Quercus agrifolia</i>	36.5	114.61	1	21	32	F	X	X	Dieback, borers, trunk rot, included bark
916	Coast Live Oak	<i>Quercus agrifolia</i>	21.75	68.30	1	24	28	C	X		Dieback, borers, trunk rot, included bark
917	Coast Live Oak	<i>Quercus agrifolia</i>	61.5	193.11	1	31	96	F	X	X	Dieback, borers, branch and trunk rot
918	Coast Live Oak	<i>Quercus agrifolia</i>	39	122.46	1	26	56	D	X	X	Included bark, branch rot, borers
919	Peruvian Pepper Tree	<i>Schinus molle</i>	65.5	205.67	1	44	66	D		X	Borers, branch and trunk rot



AMERICAN JEWISH UNIVERSITY, BRANDEIS BARDIN CAMPUS FACILITIES UPGRADE PROJECT

Results

Tree Tag No.	Common Name	Scientific Name	DBH (in)	Circumference (in)	Trunks/ Stems	Height (ft)	Dripline Diameter (ft)	Health	Protected Tree	Heritage Tree	Comments ¹
920	Peruvian Pepper Tree	<i>Schinus molle</i>	4.75	14.92	1	8	18	B			Included bark
921	Peruvian Pepper Tree	<i>Schinus molle</i>	53.25	167.21	1	46	76	D		X	Borers, trunk rot
922	Coast Live Oak	<i>Quercus agrifolia</i>	3	9.42	1	13	14	C	X		Sapsuckers
923	Coast Live Oak	<i>Quercus agrifolia</i>	10.25	32.19	1	23	32	C	X		Leans east
924	Peruvian Pepper Tree	<i>Schinus molle</i>	5.25	16.49	1	12	12	C			Pampas grass at base
925	Peruvian Pepper Tree	<i>Schinus molle</i>	5	15.70	1	9	14	C			Included bark
926	Peruvian Pepper Tree	<i>Schinus molle</i>	3.5	10.99	1	12	16	C			Included bark



AMERICAN JEWISH UNIVERSITY, BRANDEIS BARDIN CAMPUS FACILITIES UPGRADE PROJECT

Results

Tree Tag No.	Common Name	Scientific Name	DBH (in)	Circumference (in)	Trunks/ Stems	Height (ft)	Dripline Diameter (ft)	Health	Protected Tree	Heritage Tree	Comments ¹
927	Peruvian Pepper Tree	<i>Schinus molle</i>	7.25	22.77	1	12	16	C			Included bark, basal rubbing
928	Peruvian Pepper Tree	<i>Schinus molle</i>	3.75	11.78	1	11	14	C			Included bark
929	Peruvian Pepper Tree	<i>Schinus molle</i>	7.75	24.34	1	12	14	C			Included bark
930	Peruvian Pepper Tree	<i>Schinus molle</i>	4.25	13.35	1	17	18	C			Included bark
931	Peruvian Pepper Tree	<i>Schinus molle</i>	37.5	117.75	1	28	58	D		X	Sapsuckers, included bark, borers, basal rot
932	Coast Live Oak	<i>Quercus agrifolia</i>	9	28.26	1	9	30	C	X		Included bark



AMERICAN JEWISH UNIVERSITY, BRANDEIS BARDIN CAMPUS FACILITIES UPGRADE PROJECT

Results

Tree Tag No.	Common Name	Scientific Name	DBH (in)	Circumference (in)	Trunks/ Stems	Height (ft)	Dripline Diameter (ft)	Health	Protected Tree	Heritage Tree	Comments ¹
933	Peruvian Pepper Tree	<i>Schinus molle</i>	23	72.22	1	36	40	D			Included bark, sapsuckers, borers
934	Coast Live Oak	<i>Quercus agrifolia</i>	7.25	22.77	1	10	16	C	X		Included bark
935	Coast Live Oak	<i>Quercus agrifolia</i>	2	6.28	1	7	8	C			Good health
936	Coast Live Oak	<i>Quercus agrifolia</i>	5.75	18.06	1	17	18	C	X		Good health
937	Coast Live Oak	<i>Quercus agrifolia</i>	6	18.84	1	15	12	C	X		Good health
938	Peruvian Pepper Tree	<i>Schinus molle</i>	23.75	74.58	1	30	42	D			Included bark, trunk rot
939	Peruvian Pepper Tree	<i>Schinus molle</i>	20	62.80	1	28	46	D			Included bark, trunk rot



AMERICAN JEWISH UNIVERSITY, BRANDEIS BARDIN CAMPUS FACILITIES UPGRADE PROJECT

Results

Tree Tag No.	Common Name	Scientific Name	DBH (in)	Circumference (in)	Trunks/ Stems	Height (ft)	Dripline Diameter (ft)	Health	Protected Tree	Heritage Tree	Comments ¹
940	Peruvian Pepper Tree	<i>Schinus molle</i>	32.5	102.05	1	18	30	C		X	Included bark
941	Peruvian Pepper Tree	<i>Schinus molle</i>	17.5	54.95	1	20	44	C			Included bark
942	Peruvian Pepper Tree	<i>Schinus molle</i>	24.5	76.93	1	20	24	C			Included bark
943	Peruvian Pepper Tree	<i>Schinus molle</i>	45	141.30	1	34	52	D		X	Included bark, borers, trunk rot
944	Peruvian Pepper Tree	<i>Schinus molle</i>	13.5	42.39	1	19	20	C			Included bark
945	Peruvian Pepper Tree	<i>Schinus molle</i>	43	135.02	1	48	44	D		X	Ground rot, included bark, borers
946	Coast Live Oak	<i>Quercus agrifolia</i>	3.5	10.99	1	12	14	B	X		Good health



AMERICAN JEWISH UNIVERSITY, BRANDEIS BARDIN CAMPUS FACILITIES UPGRADE PROJECT

Results

Tree Tag No.	Common Name	Scientific Name	DBH (in)	Circumference (in)	Trunks/ Stems	Height (ft)	Dripline Diameter (ft)	Health	Protected Tree	Heritage Tree	Comments ¹
947	Peruvian Pepper Tree	<i>Schinus molle</i>	16.75	52.60	1	28	28	C			Roots lifting asphalt
948	Peruvian Pepper Tree	<i>Schinus molle</i>	8	25.12	1	23	24	C			Included bark
949	Coast Live Oak	<i>Quercus agrifolia</i>	13	40.82	1	24	22	D	X		Borers, trunk rot
950	Coast Live Oak	<i>Quercus agrifolia</i>	14.5	45.53	1	18	22	D	X		Sapsuckers, branch rot
951	Coast Live Oak	<i>Quercus agrifolia</i>	43.25	135.81	1	30	44	F	X	X	Tree split, borers
952	Coast Live Oak	<i>Quercus agrifolia</i>	27	84.78	1	19	36	C	X		Borers
953	Coast Live Oak	<i>Quercus agrifolia</i>	3.25	10.21	1	12	14	C	X		Trunk rot



AMERICAN JEWISH UNIVERSITY, BRANDEIS BARDIN CAMPUS FACILITIES UPGRADE PROJECT

Results

Tree Tag No.	Common Name	Scientific Name	DBH (in)	Circumference (in)	Trunks/ Stems	Height (ft)	Dripline Diameter (ft)	Health	Protected Tree	Heritage Tree	Comments ¹
954	Coast Live Oak	<i>Quercus agrifolia</i>	24.25	76.15	1	19	44	D	X		Borers, trunk rot
955	Coast Live Oak	<i>Quercus agrifolia</i>	26.75	84.00	1	24	44	D	X		Borers, included bark
956	Coast Live Oak	<i>Quercus agrifolia</i>	24.75	77.72	1	22	36	F	X		Borers, trunk and basal rot
957	Peruvian Pepper Tree	<i>Schinus molle</i>	23	72.22	1	30	40	D			Borers, trunk rot
958	Canary Island Pine	<i>Pinus canariensis</i>	11.75	36.90	1	40	50	B			Good health
959	Cork Oak	<i>Quercus suber</i>	8.75	27.48	1	13	18	B	X		Good health
960	Peruvian Pepper Tree	<i>Schinus molle</i>	16.5	51.81	1	26	42	D			Trunk rot



AMERICAN JEWISH UNIVERSITY, BRANDEIS BARDIN CAMPUS FACILITIES UPGRADE PROJECT

Results

Tree Tag No.	Common Name	Scientific Name	DBH (in)	Circumference (in)	Trunks/ Stems	Height (ft)	Dripline Diameter (ft)	Health	Protected Tree	Heritage Tree	Comments ¹
961	Peruvian Pepper Tree	<i>Schinus molle</i>	15.5	48.67	1	26	44	D			Trunk rot
962	Peruvian Pepper Tree	<i>Schinus molle</i>	15	47.10	1	22	46	D			Borers, trunk rot, dieback
963	Coast Live Oak	<i>Quercus agrifolia</i>	7.5	23.55	1	14	16	D	X		Leans east, borers, trunk rot
964	Peruvian Pepper Tree	<i>Schinus molle</i>	18.5	58.09	1	26	30	C			Included bark, sapsuckers
965	Peruvian Pepper Tree	<i>Schinus molle</i>	18.5	58.09	1	23	42	C			Included bark, sapsuckers
966	Peruvian Pepper Tree	<i>Schinus molle</i>	28	87.92	1	23	42	D			Included bark, trunk rot, borers
967	Peruvian Pepper Tree	<i>Schinus molle</i>	17.5	54.95	1	24	36	C			Sapsuckers



AMERICAN JEWISH UNIVERSITY, BRANDEIS BARDIN CAMPUS FACILITIES UPGRADE PROJECT

Results

Tree Tag No.	Common Name	Scientific Name	DBH (in)	Circumference (in)	Trunks/ Stems	Height (ft)	Dripline Diameter (ft)	Health	Protected Tree	Heritage Tree	Comments ¹
968	Peruvian Pepper Tree	<i>Schinus molle</i>	19.75	62.02	1	42	36	D			Trunk rot, split branch
969	Coast Live Oak	<i>Quercus agrifolia</i>	5	15.70	1	10	12	C	X		Included bark
970	Peruvian Pepper Tree	<i>Schinus molle</i>	17.5	54.95	1	44	44	F			Borers, trunk rot
971	Coast Live Oak	<i>Quercus agrifolia</i>	4	12.56	1	8	16	B	X		Close to car port
972	Peruvian Pepper Tree	<i>Schinus molle</i>	28	87.92	1	44	56	F			Close to car port, trunk rot
973	Coast Live Oak	<i>Quercus agrifolia</i>	3	9.42	1	16	8	C	X		Good health
974	Coast Live Oak	<i>Quercus agrifolia</i>	8.5	26.69	1	27	30	C	X		Sapsuckers



AMERICAN JEWISH UNIVERSITY, BRANDEIS BARDIN CAMPUS FACILITIES UPGRADE PROJECT

Results

Tree Tag No.	Common Name	Scientific Name	DBH (in)	Circumference (in)	Trunks/ Stems	Height (ft)	Dripline Diameter (ft)	Health	Protected Tree	Heritage Tree	Comments ¹
975	Coast Live Oak	<i>Quercus agrifolia</i>	9.5	29.83	1	18	30	C	X		Galls, included bark
976	Peruvian Pepper Tree	<i>Schinus molle</i>	24	75.36	1	65	72	B			Good health
977	Peruvian Pepper Tree	<i>Schinus molle</i>	25	78.50	1	76	72	B			Good health
978	Peruvian Pepper Tree	<i>Schinus molle</i>	11.75	36.90	1	28	36	D			Trunk rot, borers
979	Peruvian Pepper Tree	<i>Schinus molle</i>	8	25.12	1	8	12	C			Included bark
980	Italian Cypress	<i>Cupressus sempervirens</i>	24.75	77.72	1	44	0	C			Good health
981	Mimosa Tree	<i>Albizia</i> sp.	10.5	32.97	1	8	18	D			Trunk and branch rot



AMERICAN JEWISH UNIVERSITY, BRANDEIS BARDIN CAMPUS FACILITIES UPGRADE PROJECT

Results

Tree Tag No.	Common Name	Scientific Name	DBH (in)	Circumference (in)	Trunks/ Stems	Height (ft)	Dripline Diameter (ft)	Health	Protected Tree	Heritage Tree	Comments ¹
982	Peruvian Pepper Tree	<i>Schinus molle</i>	19	59.66	1	25	12	C			Good health
983	Fan palm	<i>Washingtonia robusta</i>	17.5	54.95	1	37	14	C			Good health
984	Peruvian Pepper Tree	<i>Schinus molle</i>	24	75.36	1	35	20	C			Exposed roots, sapsuckers
985	Peruvian Pepper Tree	<i>Schinus molle</i>	57	178.98	5	35	25	C		X	Improper pruning of branches, several dead branches
986	Peruvian Pepper Tree	<i>Schinus molle</i>	34.5	108.33	8	24	18	C			Heavy lower canopy
987	Olive	<i>Olea sp.</i>	37.5	117.75	12	15	15	C			Several dead branches



AMERICAN JEWISH UNIVERSITY, BRANDEIS BARDIN CAMPUS FACILITIES UPGRADE PROJECT

Results

Tree Tag No.	Common Name	Scientific Name	DBH (in)	Circumference (in)	Trunks/ Stems	Height (ft)	Dripline Diameter (ft)	Health	Protected Tree	Heritage Tree	Comments ¹
988	African sumac	<i>Searsia</i> sp.	37.5	117.75	17	18	12	B			Good health
989	African sumac	<i>Searsia</i> sp.	14.5	45.53	16	13	6	B			Good health
990	African sumac	<i>Searsia</i> sp.	46.2	145.07	33	20	15	B			Good health
991	African sumac	<i>Searsia</i> sp.	18.28	57.40	27	12	8	B			Good health
992	African sumac	<i>Searsia</i> sp.	45	141.30	29	18	18	B			Good health
993	African sumac	<i>Searsia</i> sp.	34.5	108.33	31	15	15	B			Good health
994	African sumac	<i>Searsia</i> sp.	28.8	90.43	19	20	16	B			Good health



AMERICAN JEWISH UNIVERSITY, BRANDEIS BARDIN CAMPUS FACILITIES UPGRADE PROJECT

Results

Tree Tag No.	Common Name	Scientific Name	DBH (in)	Circumference (in)	Trunks/ Stems	Height (ft)	Dripline Diameter (ft)	Health	Protected Tree	Heritage Tree	Comments ¹
995	Acacia	<i>Acacia</i> sp.	25.6	80.38	18	36	16	C			Included bark, trunk rot, exposed roots
996	African sumac	<i>Searsia</i> sp.	51	160.14	42	12	8	B			Good health
997	African sumac	<i>Searsia</i> sp.	19	59.66	18	8	6	B			Good health
998	African sumac	<i>Searsia</i> sp.	38	119.32	29	12	8	B			Good health
999	Peruvian Pepper Tree	<i>Schinus molle</i>	57.5	180.55	4	40	20	C		X	Included bark, several dead branches
1000	African sumac	<i>Searsia</i> sp.	26.8	84.15	19	15	14	B			Good health

Notes: ¹

Borers are any type of beetle that tunnels into a tree and spends part of its life cycle within it.

Cankers are a fungal or bacterial infection indicated by callus developing around the dead tissue causing the area to increase in size every year.

Notes¹

Crown is comprised of all the leaves and branches of the tree.



AMERICAN JEWISH UNIVERSITY, BRANDEIS BARDIN CAMPUS FACILITIES UPGRADE PROJECT

Results

Tree Tag No.	Common Name	Scientific Name	DBH (in)	Circumference (in)	Trunks/ Stems	Height (ft)	Dripline Diameter (ft)	Health	Protected Tree	Heritage Tree	Comments ¹
--------------	-------------	-----------------	----------	--------------------	---------------	-------------	------------------------	--------	----------------	---------------	-----------------------

Dieback is the death of the leaves and twigs of the tree usually beginning at the tips, progressing to the inner parts of the crown.

Failing refers to the integrity of the tree or branch becoming compromised to a point where it falls.

Fissures in a tree trunk can be caused by a wound healing poorly and indicate a possible weak point in the tree's stability.

Frass is the woody excrement of boring insect larva and boring insects.

Galls are a growth abnormality caused by bacteria, insects, or mites.

Included bark is an area where the bark between two branches is turned inward, rather than pushed outward.

Mistletoe is the common name of a parasitic plant that gets water and nutrients from the host plant.

Sapsuckers are a north American woodpecker that peck at tree branches/ trunks and lap at the sap from the wounds.

Scale insects are insects that live on the branches or leaves of a tree, which pierce the tissue with their mouth; adults are sessile.

Suckers are weakly attached branches trees grow as a response to stress.

Yellowing leaves also called chlorosis is the yellowing of leaves that should be healthy but are not due to a nutrient deficiency.

Table 3 Tree Impacts

Tree Tag No.	Common Name	Scientific Name	Proposed for Removal	Encroachment Zone Impacted		Tree Valuation (Impacted Protected/Heritage Trees Only)
				Impacted Encroachment Zone (Less than 20% impacted)	Significantly Impacted Encroachment Zone (More than 20% impacted)	
601	African sumac	<i>Searsia</i> sp.				
602	African sumac	<i>Searsia</i> sp.				



AMERICAN JEWISH UNIVERSITY, BRANDEIS BARDIN CAMPUS FACILITIES UPGRADE PROJECT

Results

Tree Tag No.	Common Name	Scientific Name	Proposed for Removal	Encroachment Zone Impacted		Tree Valuation (Impacted Protected/Heritage Trees Only)
				Impacted Encroachment Zone (Less than 20% impacted)	Significantly Impacted Encroachment Zone (More than 20% impacted)	
603	Peruvian Pepper Tree	<i>Schinus molle</i>				
604	Tasmanian Blue Gum	<i>Eucalyptus globulus</i>				
605	Peruvian Pepper Tree	<i>Schinus molle</i>				
606	Peruvian Pepper Tree	<i>Schinus molle</i>				
607	Peruvian Pepper Tree	<i>Schinus molle</i>				



AMERICAN JEWISH UNIVERSITY, BRANDEIS BARDIN CAMPUS FACILITIES UPGRADE PROJECT

Results

Tree Tag No.	Common Name	Scientific Name	Proposed for Removal	Encroachment Zone Impacted		Tree Valuation (Impacted Protected/Heritage Trees Only)
				Impacted Encroachment Zone (Less than 20% impacted)	Significantly Impacted Encroachment Zone (More than 20% impacted)	
608	Tasmanian Blue Gum	<i>Eucalyptus globulus</i>				
609	Tasmanian Blue Gum	<i>Eucalyptus globulus</i>				
610	Aleppo Pine	<i>Pinus halepensis</i>				
611	Sycamore	<i>Platanus racemosa</i>				
612	Sycamore	<i>Platanus racemosa</i>				



AMERICAN JEWISH UNIVERSITY, BRANDEIS BARDIN CAMPUS FACILITIES UPGRADE PROJECT

Results

Tree Tag No.	Common Name	Scientific Name	Proposed for Removal	Encroachment Zone Impacted		Tree Valuation (Impacted Protected/Heritage Trees Only)
				Impacted Encroachment Zone (Less than 20% impacted)	Significantly Impacted Encroachment Zone (More than 20% impacted)	
613	Sycamore	<i>Platanus racemosa</i>				
614	Sycamore	<i>Platanus racemosa</i>				
615	Sycamore	<i>Platanus racemosa</i>				
616	Peruvian Pepper Tree	<i>Schinus molle</i>				
617	Sydney Blue Gum	<i>Eucalyptus saligna</i>				



AMERICAN JEWISH UNIVERSITY, BRANDEIS BARDIN CAMPUS FACILITIES UPGRADE PROJECT

Results

Tree Tag No.	Common Name	Scientific Name	Proposed for Removal	Encroachment Zone Impacted		Tree Valuation (Impacted Protected/Heritage Trees Only)
				Impacted Encroachment Zone (Less than 20% impacted)	Significantly Impacted Encroachment Zone (More than 20% impacted)	
618	Tasmanian Blue Gum	<i>Eucalyptus globulus</i>	X			\$26,899
619	Peruvian Pepper Tree	<i>Schinus molle</i>	X			
620	Coast Live Oak	<i>Quercus agrifolia</i>				
621	Peruvian Pepper Tree	<i>Schinus molle</i>				
622	Peruvian Pepper Tree	<i>Schinus molle</i>				



AMERICAN JEWISH UNIVERSITY, BRANDEIS BARDIN CAMPUS FACILITIES UPGRADE PROJECT

Results

Tree Tag No.	Common Name	Scientific Name	Proposed for Removal	Encroachment Zone Impacted		Tree Valuation (Impacted Protected/Heritage Trees Only)
				Impacted Encroachment Zone (Less than 20% impacted)	Significantly Impacted Encroachment Zone (More than 20% impacted)	
623	Fan palm	<i>Washingtonia robusta</i>				
624	Scrub Oak	<i>Quercus berberidifolia</i>				
625	Scrub Oak	<i>Quercus berberidifolia</i>				
626	Scrub Oak	<i>Quercus berberidifolia</i>				
627	Scrub Oak	<i>Quercus berberidifolia</i>				



AMERICAN JEWISH UNIVERSITY, BRANDEIS BARDIN CAMPUS FACILITIES UPGRADE PROJECT

Results

Tree Tag No.	Common Name	Scientific Name	Proposed for Removal	Encroachment Zone Impacted		Tree Valuation (Impacted Protected/Heritage Trees Only)
				Impacted Encroachment Zone (Less than 20% impacted)	Significantly Impacted Encroachment Zone (More than 20% impacted)	
628	Coast Live Oak	<i>Quercus agrifolia</i>				
629	Coast Live Oak	<i>Quercus agrifolia</i>				
630	Scrub Oak	<i>Quercus berberidifolia</i>				
631	Scrub Oak	<i>Quercus berberidifolia</i>				
632	Coast Live Oak	<i>Quercus agrifolia</i>				



AMERICAN JEWISH UNIVERSITY, BRANDEIS BARDIN CAMPUS FACILITIES UPGRADE PROJECT

Results

Tree Tag No.	Common Name	Scientific Name	Proposed for Removal	Encroachment Zone Impacted		Tree Valuation (Impacted Protected/Heritage Trees Only)
				Impacted Encroachment Zone (Less than 20% impacted)	Significantly Impacted Encroachment Zone (More than 20% impacted)	
633	Coast Live Oak	<i>Quercus agrifolia</i>				
634	Coast Live Oak	<i>Quercus agrifolia</i>				
635	Scrub Oak	<i>Quercus berberidifolia</i>				
636	Peruvian Pepper Tree	<i>Schinus molle</i>				
637	Peruvian Pepper Tree	<i>Schinus molle</i>				



AMERICAN JEWISH UNIVERSITY, BRANDEIS BARDIN CAMPUS FACILITIES UPGRADE PROJECT

Results

Tree Tag No.	Common Name	Scientific Name	Proposed for Removal	Encroachment Zone Impacted		Tree Valuation (Impacted Protected/Heritage Trees Only)
				Impacted Encroachment Zone (Less than 20% impacted)	Significantly Impacted Encroachment Zone (More than 20% impacted)	
638	Peruvian Pepper Tree	<i>Schinus molle</i>				
639	Scrub Oak	<i>Quercus berberidifolia</i>		X		
640	Peruvian Pepper Tree	<i>Schinus molle</i>				
641	Peruvian Pepper Tree	<i>Schinus molle</i>				
642	Peruvian Pepper Tree	<i>Schinus molle</i>				



AMERICAN JEWISH UNIVERSITY, BRANDEIS BARDIN CAMPUS FACILITIES UPGRADE PROJECT

Results

Tree Tag No.	Common Name	Scientific Name	Proposed for Removal	Encroachment Zone Impacted		Tree Valuation (Impacted Protected/Heritage Trees Only)
				Impacted Encroachment Zone (Less than 20% impacted)	Significantly Impacted Encroachment Zone (More than 20% impacted)	
643	Coast Live Oak	<i>Quercus agrifolia</i>				
644	Scrub Oak	<i>Quercus berberidifolia</i>				
645	Coast Live Oak	<i>Quercus agrifolia</i>		X		
646	Fan palm	<i>Washingtonia robusta</i>				
647	Coast Live Oak	<i>Quercus agrifolia</i>				



AMERICAN JEWISH UNIVERSITY, BRANDEIS BARDIN CAMPUS FACILITIES UPGRADE PROJECT

Results

Tree Tag No.	Common Name	Scientific Name	Proposed for Removal	Encroachment Zone Impacted		Tree Valuation (Impacted Protected/Heritage Trees Only)
				Impacted Encroachment Zone (Less than 20% impacted)	Significantly Impacted Encroachment Zone (More than 20% impacted)	
648	Fan palm	<i>Washingtonia robusta</i>			X	
649	Coast Live Oak	<i>Quercus agrifolia</i>			X	\$1,115.00
650	Alder	<i>Alnus</i> sp.				
651	Coast Live Oak	<i>Quercus agrifolia</i>				
652	Scrub Oak	<i>Quercus berberidifolia</i>	X			
653	Alnus sp.	<i>Alnus</i> sp.	X			



AMERICAN JEWISH UNIVERSITY, BRANDEIS BARDIN CAMPUS FACILITIES UPGRADE PROJECT

Results

Tree Tag No.	Common Name	Scientific Name	Proposed for Removal	Encroachment Zone Impacted		Tree Valuation (Impacted Protected/Heritage Trees Only)
				Impacted Encroachment Zone (Less than 20% impacted)	Significantly Impacted Encroachment Zone (More than 20% impacted)	
654	Alnus sp.	<i>Alnus</i> sp.	X			
655	Peruvian Pepper Tree	<i>Schinus molle</i>	X			
656	Peruvian Pepper Tree	<i>Schinus molle</i>	X			
657	Peruvian Pepper Tree	<i>Schinus molle</i>	X			
658	Peruvian Pepper Tree	<i>Schinus molle</i>	X			
659	Peruvian Pepper Tree	<i>Schinus molle</i>	X			



AMERICAN JEWISH UNIVERSITY, BRANDEIS BARDIN CAMPUS FACILITIES UPGRADE PROJECT

Results

Tree Tag No.	Common Name	Scientific Name	Proposed for Removal	Encroachment Zone Impacted		Tree Valuation (Impacted Protected/Heritage Trees Only)
				Impacted Encroachment Zone (Less than 20% impacted)	Significantly Impacted Encroachment Zone (More than 20% impacted)	
701	Tasmanian Blue Gum	<i>Eucalyptus globulus</i>				
702	Sycamore	<i>Platanus racemosa</i>				
703	Sycamore	<i>Platanus racemosa</i>				
704	Coast Live Oak	<i>Quercus agrifolia</i>				
705	Tasmanian Blue Gum	<i>Eucalyptus globulus</i>				



AMERICAN JEWISH UNIVERSITY, BRANDEIS BARDIN CAMPUS FACILITIES UPGRADE PROJECT

Results

Tree Tag No.	Common Name	Scientific Name	Proposed for Removal	Encroachment Zone Impacted		Tree Valuation (Impacted Protected/Heritage Trees Only)
				Impacted Encroachment Zone (Less than 20% impacted)	Significantly Impacted Encroachment Zone (More than 20% impacted)	
706	Peruvian Pepper Tree	<i>Schinus molle</i>				
707	Sydney Blue Gum	<i>Eucalyptus saligna</i>				
708	Peruvian Pepper Tree	<i>Schinus molle</i>				
709	Sydney Blue Gum	<i>Eucalyptus saligna</i>				
710	Coast Live Oak	<i>Quercus agrifolia</i>				



AMERICAN JEWISH UNIVERSITY, BRANDEIS BARDIN CAMPUS FACILITIES UPGRADE PROJECT

Results

Tree Tag No.	Common Name	Scientific Name	Proposed for Removal	Encroachment Zone Impacted		Tree Valuation (Impacted Protected/Heritage Trees Only)
				Impacted Encroachment Zone (Less than 20% impacted)	Significantly Impacted Encroachment Zone (More than 20% impacted)	
711	Coast Live Oak	<i>Quercus agrifolia</i>				
712	Tasmanian Blue Gum	<i>Eucalyptus globulus</i>				
713	Sycamore	<i>Platanus racemosa</i>				
714	Sycamore	<i>Platanus racemosa</i>		X		
715	Sycamore	<i>Platanus racemosa</i>			X	\$3,321.00



AMERICAN JEWISH UNIVERSITY, BRANDEIS BARDIN CAMPUS FACILITIES UPGRADE PROJECT

Results

Tree Tag No.	Common Name	Scientific Name	Proposed for Removal	Encroachment Zone Impacted		Tree Valuation (Impacted Protected/Heritage Trees Only)
				Impacted Encroachment Zone (Less than 20% impacted)	Significantly Impacted Encroachment Zone (More than 20% impacted)	
716	Sycamore	<i>Platanus racemosa</i>				
717	Sycamore	<i>Platanus racemosa</i>			X	\$917.00
718	Sycamore	<i>Platanus racemosa</i>			X	\$2,819.00
719	Sydney Blue Gum	<i>Eucalyptus saligna</i>			X	
720	Peruvian Pepper Tree	<i>Schinus molle</i>				



AMERICAN JEWISH UNIVERSITY, BRANDEIS BARDIN CAMPUS FACILITIES UPGRADE PROJECT

Results

Tree Tag No.	Common Name	Scientific Name	Proposed for Removal	Encroachment Zone Impacted		Tree Valuation (Impacted Protected/Heritage Trees Only)
				Impacted Encroachment Zone (Less than 20% impacted)	Significantly Impacted Encroachment Zone (More than 20% impacted)	
721	Sydney Blue Gum	<i>Eucalyptus saligna</i>				
722	Sycamore	<i>Platanus racemosa</i>				
723	Sycamore	<i>Platanus racemosa</i>				
724	Sycamore	<i>Platanus racemosa</i>				
725	Sycamore	<i>Platanus racemosa</i>				



AMERICAN JEWISH UNIVERSITY, BRANDEIS BARDIN CAMPUS FACILITIES UPGRADE PROJECT

Results

Tree Tag No.	Common Name	Scientific Name	Proposed for Removal	Encroachment Zone Impacted		Tree Valuation (Impacted Protected/Heritage Trees Only)
				Impacted Encroachment Zone (Less than 20% impacted)	Significantly Impacted Encroachment Zone (More than 20% impacted)	
726	Sydney Blue Gum	<i>Eucalyptus saligna</i>				
727	Sycamore	<i>Platanus racemosa</i>				
728	Sycamore	<i>Platanus racemosa</i>				
729	River Red Gum	<i>Eucalyptus camaldulensis</i>				
730	Peruvian Pepper Tree	<i>Schinus molle</i>				



AMERICAN JEWISH UNIVERSITY, BRANDEIS BARDIN CAMPUS FACILITIES UPGRADE PROJECT

Results

Tree Tag No.	Common Name	Scientific Name	Proposed for Removal	Encroachment Zone Impacted		Tree Valuation (Impacted Protected/Heritage Trees Only)
				Impacted Encroachment Zone (Less than 20% impacted)	Significantly Impacted Encroachment Zone (More than 20% impacted)	
731	Aleppo Pine	<i>Pinus halepensis</i>		X		
732	Aleppo Pine	<i>Pinus halepensis</i>				
733	Italian Cypress	<i>Cupressus sempervirens</i>				
734	Aleppo Pine	<i>Pinus halepensis</i>		X		
735	Italian Cypress	<i>Cupressus sempervirens</i>	X			



AMERICAN JEWISH UNIVERSITY, BRANDEIS BARDIN CAMPUS FACILITIES UPGRADE PROJECT

Results

Tree Tag No.	Common Name	Scientific Name	Proposed for Removal	Encroachment Zone Impacted		Tree Valuation (Impacted Protected/Heritage Trees Only)
				Impacted Encroachment Zone (Less than 20% impacted)	Significantly Impacted Encroachment Zone (More than 20% impacted)	
736	Aleppo Pine	<i>Pinus halepensis</i>				
737	Aleppo Pine	<i>Pinus halepensis</i>				
738	Aleppo Pine	<i>Pinus halepensis</i>				
739	Aleppo Pine	<i>Pinus halepensis</i>		X		
740	Aleppo Pine	<i>Pinus halepensis</i>		X		



AMERICAN JEWISH UNIVERSITY, BRANDEIS BARDIN CAMPUS FACILITIES UPGRADE PROJECT

Results

Tree Tag No.	Common Name	Scientific Name	Proposed for Removal	Encroachment Zone Impacted		Tree Valuation (Impacted Protected/Heritage Trees Only)
				Impacted Encroachment Zone (Less than 20% impacted)	Significantly Impacted Encroachment Zone (More than 20% impacted)	
741	Italian Cypress	<i>Cupressus sempervirens</i>	X			
742	Italian Cypress	<i>Cupressus sempervirens</i>	X			
743	Aleppo Pine	<i>Pinus halepensis</i>	X			
744	Italian Cypress	<i>Cupressus sempervirens</i>				
745	Italian Cypress	<i>Cupressus sempervirens</i>				



AMERICAN JEWISH UNIVERSITY, BRANDEIS BARDIN CAMPUS FACILITIES UPGRADE PROJECT

Results

Tree Tag No.	Common Name	Scientific Name	Proposed for Removal	Encroachment Zone Impacted		Tree Valuation (Impacted Protected/Heritage Trees Only)
				Impacted Encroachment Zone (Less than 20% impacted)	Significantly Impacted Encroachment Zone (More than 20% impacted)	
746	Coast Live Oak	<i>Quercus agrifolia</i>			X	\$311
747	Italian Cypress	<i>Cupressus sempervirens</i>				
748	Stone Pine	<i>Pinus pinea</i>		X		
749	Canary Island Pine	<i>Pinus canariensis</i>				
750	Italian Cypress	<i>Cupressus sempervirens</i>				
751	Stone Pine	<i>Pinus pinea</i>				



AMERICAN JEWISH UNIVERSITY, BRANDEIS BARDIN CAMPUS FACILITIES UPGRADE PROJECT

Results

Tree Tag No.	Common Name	Scientific Name	Proposed for Removal	Encroachment Zone Impacted		Tree Valuation (Impacted Protected/Heritage Trees Only)
				Impacted Encroachment Zone (Less than 20% impacted)	Significantly Impacted Encroachment Zone (More than 20% impacted)	
752	Stone Pine	<i>Pinus pinea</i>				
753	Deodar Cedar	<i>Cedrus deodara</i>				
754	Aleppo Pine	<i>Pinus halepensis</i>				
755	Stone Pine	<i>Pinus pinea</i>				
756	Stone Pine	<i>Pinus pinea</i>				
757	Deodar Cedar	<i>Cedrus deodara</i>				



AMERICAN JEWISH UNIVERSITY, BRANDEIS BARDIN CAMPUS FACILITIES UPGRADE PROJECT

Results

Tree Tag No.	Common Name	Scientific Name	Proposed for Removal	Encroachment Zone Impacted		Tree Valuation (Impacted Protected/Heritage Trees Only)
				Impacted Encroachment Zone (Less than 20% impacted)	Significantly Impacted Encroachment Zone (More than 20% impacted)	
758	Aleppo Pine	<i>Pinus halepensis</i>				
759	Aleppo Pine	<i>Pinus halepensis</i>				
760	Canary Island Pine	<i>Pinus canariensis</i>				
761	Aleppo Pine	<i>Pinus halepensis</i>				
762	Aleppo Pine	<i>Pinus halepensis</i>				



AMERICAN JEWISH UNIVERSITY, BRANDEIS BARDIN CAMPUS FACILITIES UPGRADE PROJECT

Results

Tree Tag No.	Common Name	Scientific Name	Proposed for Removal	Encroachment Zone Impacted		Tree Valuation (Impacted Protected/Heritage Trees Only)
				Impacted Encroachment Zone (Less than 20% impacted)	Significantly Impacted Encroachment Zone (More than 20% impacted)	
763	Sydney Blue Gum	<i>Eucalyptus saligna</i>				
764	Aleppo Pine	<i>Pinus halepensis</i>				
765	Aleppo Pine	<i>Pinus halepensis</i>				
766	Aleppo Pine	<i>Pinus halepensis</i>				
767	Aleppo Pine	<i>Pinus halepensis</i>				



AMERICAN JEWISH UNIVERSITY, BRANDEIS BARDIN CAMPUS FACILITIES UPGRADE PROJECT

Results

Tree Tag No.	Common Name	Scientific Name	Proposed for Removal	Encroachment Zone Impacted		Tree Valuation (Impacted Protected/Heritage Trees Only)
				Impacted Encroachment Zone (Less than 20% impacted)	Significantly Impacted Encroachment Zone (More than 20% impacted)	
768	Aleppo Pine	<i>Pinus halepensis</i>				
769	Canary Island Pine	<i>Pinus canariensis</i>				
770	Aleppo Pine	<i>Pinus halepensis</i>				
771	Aleppo Pine	<i>Pinus halepensis</i>				
772	Peruvian Pepper Tree	<i>Schinus molle</i>				



AMERICAN JEWISH UNIVERSITY, BRANDEIS BARDIN CAMPUS FACILITIES UPGRADE PROJECT

Results

Tree Tag No.	Common Name	Scientific Name	Proposed for Removal	Encroachment Zone Impacted		Tree Valuation (Impacted Protected/Heritage Trees Only)
				Impacted Encroachment Zone (Less than 20% impacted)	Significantly Impacted Encroachment Zone (More than 20% impacted)	
773	Aleppo Pine	<i>Pinus halepensis</i>	X			
774	Aleppo Pine	<i>Pinus halepensis</i>	X			
775	Coast Live Oak	<i>Quercus agrifolia</i>	X			\$957
776	Aleppo Pine	<i>Pinus halepensis</i>	X			
777	Canary Island Pine	<i>Pinus canariensis</i>	X			



AMERICAN JEWISH UNIVERSITY, BRANDEIS BARDIN CAMPUS FACILITIES UPGRADE PROJECT

Results

Tree Tag No.	Common Name	Scientific Name	Proposed for Removal	Encroachment Zone Impacted		Tree Valuation (Impacted Protected/Heritage Trees Only)
				Impacted Encroachment Zone (Less than 20% impacted)	Significantly Impacted Encroachment Zone (More than 20% impacted)	
778	Deodar Cedar	<i>Cedrus deodara</i>			X	
779	Canary Island Pine	<i>Pinus canariensis</i>	X			
780	Aleppo Pine	<i>Pinus halepensis</i>	X			
781	Canary Island Pine	<i>Pinus canariensis</i>	X			
782	Aleppo Pine	<i>Pinus halepensis</i>	X			



AMERICAN JEWISH UNIVERSITY, BRANDEIS BARDIN CAMPUS FACILITIES UPGRADE PROJECT

Results

Tree Tag No.	Common Name	Scientific Name	Proposed for Removal	Encroachment Zone Impacted		Tree Valuation (Impacted Protected/Heritage Trees Only)
				Impacted Encroachment Zone (Less than 20% impacted)	Significantly Impacted Encroachment Zone (More than 20% impacted)	
783	Aleppo Pine	<i>Pinus halepensis</i>	X			
784	Aleppo Pine	<i>Pinus halepensis</i>	X			
785	Aleppo Pine	<i>Pinus halepensis</i>	X			
786	Deodar Cedar	<i>Cedrus deodara</i>	X			
787	Coast Live Oak	<i>Quercus agrifolia</i>	X			\$1,538



AMERICAN JEWISH UNIVERSITY, BRANDEIS BARDIN CAMPUS FACILITIES UPGRADE PROJECT

Results

Tree Tag No.	Common Name	Scientific Name	Proposed for Removal	Encroachment Zone Impacted		Tree Valuation (Impacted Protected/Heritage Trees Only)
				Impacted Encroachment Zone (Less than 20% impacted)	Significantly Impacted Encroachment Zone (More than 20% impacted)	
788	Peruvian Pepper Tree	<i>Schinus molle</i>	X			
789	Peruvian Pepper Tree	<i>Schinus molle</i>	X			\$12,784
790	Aleppo Pine	<i>Pinus halepensis</i>	X			
791	Aleppo Pine	<i>Pinus halepensis</i>			X	
792	Canary Island Pine	<i>Pinus canariensis</i>		X		



AMERICAN JEWISH UNIVERSITY, BRANDEIS BARDIN CAMPUS FACILITIES UPGRADE PROJECT

Results

Tree Tag No.	Common Name	Scientific Name	Proposed for Removal	Encroachment Zone Impacted		Tree Valuation (Impacted Protected/Heritage Trees Only)
				Impacted Encroachment Zone (Less than 20% impacted)	Significantly Impacted Encroachment Zone (More than 20% impacted)	
793	Peruvian Pepper Tree	<i>Schinus molle</i>			X	
794	Aleppo Pine	<i>Pinus halepensis</i>		X		
795	Aleppo Pine	<i>Pinus halepensis</i>				
796	Peruvian Pepper Tree	<i>Schinus molle</i>				
797	Peruvian Pepper Tree	<i>Schinus molle</i>				



AMERICAN JEWISH UNIVERSITY, BRANDEIS BARDIN CAMPUS FACILITIES UPGRADE PROJECT

Results

Tree Tag No.	Common Name	Scientific Name	Proposed for Removal	Encroachment Zone Impacted		Tree Valuation (Impacted Protected/Heritage Trees Only)
				Impacted Encroachment Zone (Less than 20% impacted)	Significantly Impacted Encroachment Zone (More than 20% impacted)	
798	Sycamore	<i>Platanus racemosa</i>				
799	Sycamore	<i>Platanus racemosa</i>				
800	Sycamore	<i>Platanus racemosa</i>				
801	Liquidambar	<i>Liquidambar styraciflua</i>				
802	Maple	<i>Acer sp.</i>				
803	Arizona Ash	<i>Fraxinus velutina</i>				



AMERICAN JEWISH UNIVERSITY, BRANDEIS BARDIN CAMPUS FACILITIES UPGRADE PROJECT

Results

Tree Tag No.	Common Name	Scientific Name	Proposed for Removal	Encroachment Zone Impacted		Tree Valuation (Impacted Protected/Heritage Trees Only)
				Impacted Encroachment Zone (Less than 20% impacted)	Significantly Impacted Encroachment Zone (More than 20% impacted)	
804	Liquidambar	<i>Liquidambar styraciflua</i>				
805	Sycamore	<i>Platanus racemosa</i>				
806	Sycamore	<i>Platanus racemosa</i>				
807	Coast Live Oak	<i>Quercus agrifolia</i>				
808	Sycamore	<i>Platanus racemosa</i>				



AMERICAN JEWISH UNIVERSITY, BRANDEIS BARDIN CAMPUS FACILITIES UPGRADE PROJECT

Results

Tree Tag No.	Common Name	Scientific Name	Proposed for Removal	Encroachment Zone Impacted		Tree Valuation (Impacted Protected/Heritage Trees Only)
				Impacted Encroachment Zone (Less than 20% impacted)	Significantly Impacted Encroachment Zone (More than 20% impacted)	
809	Sycamore	<i>Platanus racemosa</i>				
810	Sycamore	<i>Platanus racemosa</i>				
811	Sycamore	<i>Platanus racemosa</i>				
812	Sycamore	<i>Platanus racemosa</i>				
813	Sycamore	<i>Platanus racemosa</i>				



AMERICAN JEWISH UNIVERSITY, BRANDEIS BARDIN CAMPUS FACILITIES UPGRADE PROJECT

Results

Tree Tag No.	Common Name	Scientific Name	Proposed for Removal	Encroachment Zone Impacted		Tree Valuation (Impacted Protected/Heritage Trees Only)
				Impacted Encroachment Zone (Less than 20% impacted)	Significantly Impacted Encroachment Zone (More than 20% impacted)	
814	Sycamore	<i>Platanus racemosa</i>				
815	Sycamore	<i>Platanus racemosa</i>				
816	Sycamore	<i>Platanus racemosa</i>				
817	Sycamore	<i>Platanus racemosa</i>				
818	Sycamore	<i>Platanus racemosa</i>				



AMERICAN JEWISH UNIVERSITY, BRANDEIS BARDIN CAMPUS FACILITIES UPGRADE PROJECT

Results

Tree Tag No.	Common Name	Scientific Name	Proposed for Removal	Encroachment Zone Impacted		Tree Valuation (Impacted Protected/Heritage Trees Only)
				Impacted Encroachment Zone (Less than 20% impacted)	Significantly Impacted Encroachment Zone (More than 20% impacted)	
819	Sycamore	<i>Platanus racemosa</i>				
820	Sycamore	<i>Platanus racemosa</i>	X			\$548
821	Sycamore	<i>Platanus racemosa</i>				
822	Sycamore	<i>Platanus racemosa</i>				
823	Sycamore	<i>Platanus racemosa</i>				



AMERICAN JEWISH UNIVERSITY, BRANDEIS BARDIN CAMPUS FACILITIES UPGRADE PROJECT

Results

Tree Tag No.	Common Name	Scientific Name	Proposed for Removal	Encroachment Zone Impacted		Tree Valuation (Impacted Protected/Heritage Trees Only)
				Impacted Encroachment Zone (Less than 20% impacted)	Significantly Impacted Encroachment Zone (More than 20% impacted)	
824	Sycamore	<i>Platanus racemosa</i>				
825	Sycamore	<i>Platanus racemosa</i>				
826	Sycamore	<i>Platanus racemosa</i>				
827	Sycamore	<i>Platanus racemosa</i>				
828	Sycamore	<i>Platanus racemosa</i>				



AMERICAN JEWISH UNIVERSITY, BRANDEIS BARDIN CAMPUS FACILITIES UPGRADE PROJECT

Results

Tree Tag No.	Common Name	Scientific Name	Proposed for Removal	Encroachment Zone Impacted		Tree Valuation (Impacted Protected/Heritage Trees Only)
				Impacted Encroachment Zone (Less than 20% impacted)	Significantly Impacted Encroachment Zone (More than 20% impacted)	
829	Sycamore	<i>Platanus racemosa</i>				
830	Coast Live Oak	<i>Quercus agrifolia</i>				
831	Coast Live Oak	<i>Quercus agrifolia</i>				
832	Coast Live Oak	<i>Quercus agrifolia</i>				
833	Coast Live Oak	<i>Quercus agrifolia</i>				



AMERICAN JEWISH UNIVERSITY, BRANDEIS BARDIN CAMPUS FACILITIES UPGRADE PROJECT

Results

Tree Tag No.	Common Name	Scientific Name	Proposed for Removal	Encroachment Zone Impacted		Tree Valuation (Impacted Protected/Heritage Trees Only)
				Impacted Encroachment Zone (Less than 20% impacted)	Significantly Impacted Encroachment Zone (More than 20% impacted)	
834	Coast Live Oak	<i>Quercus agrifolia</i>				
835	Sycamore	<i>Platanus racemosa</i>				
837	Sycamore	<i>Platanus racemosa</i>				
838	Sycamore	<i>Platanus racemosa</i>				
839	Sycamore	<i>Platanus racemosa</i>				



AMERICAN JEWISH UNIVERSITY, BRANDEIS BARDIN CAMPUS FACILITIES UPGRADE PROJECT

Results

Tree Tag No.	Common Name	Scientific Name	Proposed for Removal	Encroachment Zone Impacted		Tree Valuation (Impacted Protected/Heritage Trees Only)
				Impacted Encroachment Zone (Less than 20% impacted)	Significantly Impacted Encroachment Zone (More than 20% impacted)	
839	Sycamore	<i>Platanus racemosa</i>				
840	Sycamore	<i>Platanus racemosa</i>				
841	Sycamore	<i>Platanus racemosa</i>				
842	Sycamore	<i>Platanus racemosa</i>				
843	Sycamore	<i>Platanus racemosa</i>				



AMERICAN JEWISH UNIVERSITY, BRANDEIS BARDIN CAMPUS FACILITIES UPGRADE PROJECT

Results

Tree Tag No.	Common Name	Scientific Name	Proposed for Removal	Encroachment Zone Impacted		Tree Valuation (Impacted Protected/Heritage Trees Only)
				Impacted Encroachment Zone (Less than 20% impacted)	Significantly Impacted Encroachment Zone (More than 20% impacted)	
844	Coast Live Oak	<i>Quercus agrifolia</i>				
845	Coast Live Oak	<i>Quercus agrifolia</i>		X		
846	Coast Live Oak	<i>Quercus agrifolia</i>		X		
847	Coast Live Oak	<i>Quercus agrifolia</i>	X			\$2,791
848	Coast Live Oak	<i>Quercus agrifolia</i>	X			\$497



AMERICAN JEWISH UNIVERSITY, BRANDEIS BARDIN CAMPUS FACILITIES UPGRADE PROJECT

Results

Tree Tag No.	Common Name	Scientific Name	Proposed for Removal	Encroachment Zone Impacted		Tree Valuation (Impacted Protected/Heritage Trees Only)
				Impacted Encroachment Zone (Less than 20% impacted)	Significantly Impacted Encroachment Zone (More than 20% impacted)	
849	Coast Live Oak	<i>Quercus agrifolia</i>	X			\$3062
850	Coast Live Oak	<i>Quercus agrifolia</i>				
851	Coast Live Oak	<i>Quercus agrifolia</i>		X		
852	Coast Live Oak	<i>Quercus agrifolia</i>				
853	Aleppo Pine	<i>Pinus halepensis</i>	X			



AMERICAN JEWISH UNIVERSITY, BRANDEIS BARDIN CAMPUS FACILITIES UPGRADE PROJECT

Results

Tree Tag No.	Common Name	Scientific Name	Proposed for Removal	Encroachment Zone Impacted		Tree Valuation (Impacted Protected/Heritage Trees Only)
				Impacted Encroachment Zone (Less than 20% impacted)	Significantly Impacted Encroachment Zone (More than 20% impacted)	
854	Aleppo Pine	<i>Pinus halepensis</i>	X			
855	Aleppo Pine	<i>Pinus halepensis</i>	X			
856	Peruvian Pepper Tree	<i>Schinus molle</i>	X			\$8,801.00
857	Sycamore	<i>Platanus racemosa</i>				
858	Sycamore	<i>Platanus racemosa</i>		X		



AMERICAN JEWISH UNIVERSITY, BRANDEIS BARDIN CAMPUS FACILITIES UPGRADE PROJECT

Results

Tree Tag No.	Common Name	Scientific Name	Proposed for Removal	Encroachment Zone Impacted		Tree Valuation (Impacted Protected/Heritage Trees Only)
				Impacted Encroachment Zone (Less than 20% impacted)	Significantly Impacted Encroachment Zone (More than 20% impacted)	
859	Sycamore	<i>Platanus racemosa</i>			X	\$3,403.00
860	Sycamore	<i>Platanus racemosa</i>			X	\$1,175.00
861	Sycamore	<i>Platanus racemosa</i>		X		
862	Sycamore	<i>Platanus racemosa</i>				
863	Sycamore	<i>Platanus racemosa</i>		X		



AMERICAN JEWISH UNIVERSITY, BRANDEIS BARDIN CAMPUS FACILITIES UPGRADE PROJECT

Results

Tree Tag No.	Common Name	Scientific Name	Proposed for Removal	Encroachment Zone Impacted		Tree Valuation (Impacted Protected/Heritage Trees Only)
				Impacted Encroachment Zone (Less than 20% impacted)	Significantly Impacted Encroachment Zone (More than 20% impacted)	
864	Sycamore	<i>Platanus racemosa</i>		X		
865	Coast Live Oak	<i>Quercus agrifolia</i>		X		
866	Peruvian Pepper Tree	<i>Schinus molle</i>				
867	Fan palm	<i>Washingtonia robusta</i>				
868	Fan palm	<i>Washingtonia robusta</i>				



AMERICAN JEWISH UNIVERSITY, BRANDEIS BARDIN CAMPUS FACILITIES UPGRADE PROJECT

Results

Tree Tag No.	Common Name	Scientific Name	Proposed for Removal	Encroachment Zone Impacted		Tree Valuation (Impacted Protected/Heritage Trees Only)
				Impacted Encroachment Zone (Less than 20% impacted)	Significantly Impacted Encroachment Zone (More than 20% impacted)	
869	Fan palm	<i>Washingtonia robusta</i>				
870	Sycamore	<i>Platanus racemosa</i>				
871	Sycamore	<i>Platanus racemosa</i>				
872	Sycamore	<i>Platanus racemosa</i>				
873	Sycamore	<i>Platanus racemosa</i>				



AMERICAN JEWISH UNIVERSITY, BRANDEIS BARDIN CAMPUS FACILITIES UPGRADE PROJECT

Results

Tree Tag No.	Common Name	Scientific Name	Proposed for Removal	Encroachment Zone Impacted		Tree Valuation (Impacted Protected/Heritage Trees Only)
				Impacted Encroachment Zone (Less than 20% impacted)	Significantly Impacted Encroachment Zone (More than 20% impacted)	
874	Peruvian Pepper Tree	<i>Schinus molle</i>				
875	Liquidambar	<i>Liquidambar styraciflua</i>				
876	Coast Live Oak	<i>Quercus agrifolia</i>				
877	Sycamore	<i>Platanus racemosa</i>				
878	Coast Live Oak	<i>Quercus agrifolia</i>				



AMERICAN JEWISH UNIVERSITY, BRANDEIS BARDIN CAMPUS FACILITIES UPGRADE PROJECT

Results

Tree Tag No.	Common Name	Scientific Name	Proposed for Removal	Encroachment Zone Impacted		Tree Valuation (Impacted Protected/Heritage Trees Only)
				Impacted Encroachment Zone (Less than 20% impacted)	Significantly Impacted Encroachment Zone (More than 20% impacted)	
879	Peruvian Pepper Tree	<i>Schinus molle</i>				
880	Coast Live Oak	<i>Quercus agrifolia</i>				
881	Apple (cultivated)	<i>Malus</i> sp.		X		
882	Peruvian Pepper Tree	<i>Schinus molle</i>			X	\$31,481.00
883	Liquidambar	<i>Liquidambar styraciflua</i>	X			



AMERICAN JEWISH UNIVERSITY, BRANDEIS BARDIN CAMPUS FACILITIES UPGRADE PROJECT

Results

Tree Tag No.	Common Name	Scientific Name	Proposed for Removal	Encroachment Zone Impacted		Tree Valuation (Impacted Protected/Heritage Trees Only)
				Impacted Encroachment Zone (Less than 20% impacted)	Significantly Impacted Encroachment Zone (More than 20% impacted)	
884	Liquidambar	<i>Liquidambar styraciflua</i>	X			
885	Liquidambar	<i>Liquidambar styraciflua</i>	X			
886	Liquidambar	<i>Liquidambar styraciflua</i>	X			
887	Mulberry	<i>Morus sp.</i>				
888	Sycamore	<i>Platanus racemosa</i>			X	\$3,223.00
889	Sycamore	<i>Platanus racemosa</i>			X	\$3,223.00



AMERICAN JEWISH UNIVERSITY, BRANDEIS BARDIN CAMPUS FACILITIES UPGRADE PROJECT

Results

Tree Tag No.	Common Name	Scientific Name	Proposed for Removal	Encroachment Zone Impacted		Tree Valuation (Impacted Protected/Heritage Trees Only)
				Impacted Encroachment Zone (Less than 20% impacted)	Significantly Impacted Encroachment Zone (More than 20% impacted)	
890	Sycamore	<i>Platanus racemosa</i>		X		
891	Sycamore	<i>Platanus racemosa</i>		X		
892	Sycamore	<i>Platanus racemosa</i>		X		
893	Sycamore	<i>Platanus racemosa</i>			X	
894	Sycamore	<i>Platanus racemosa</i>		X		



AMERICAN JEWISH UNIVERSITY, BRANDEIS BARDIN CAMPUS FACILITIES UPGRADE PROJECT

Results

Tree Tag No.	Common Name	Scientific Name	Proposed for Removal	Encroachment Zone Impacted		Tree Valuation (Impacted Protected/Heritage Trees Only)
				Impacted Encroachment Zone (Less than 20% impacted)	Significantly Impacted Encroachment Zone (More than 20% impacted)	
895	Sycamore	<i>Platanus racemosa</i>			X	\$442.00
896	Sycamore	<i>Platanus racemosa</i>				
897	Sycamore	<i>Platanus racemosa</i>				
898	Sycamore	<i>Platanus racemosa</i>				
899	Peruvian Pepper Tree	<i>Schinus molle</i>				



AMERICAN JEWISH UNIVERSITY, BRANDEIS BARDIN CAMPUS FACILITIES UPGRADE PROJECT

Results

Tree Tag No.	Common Name	Scientific Name	Proposed for Removal	Encroachment Zone Impacted		Tree Valuation (Impacted Protected/Heritage Trees Only)
				Impacted Encroachment Zone (Less than 20% impacted)	Significantly Impacted Encroachment Zone (More than 20% impacted)	
900	Peruvian Pepper Tree	<i>Schinus molle</i>				
901	Canary Island Date	<i>Phoenix canariensis</i>				
902	Sycamore	<i>Platanus racemosa</i>				
903	Coast Live Oak	<i>Quercus agrifolia</i>				
904	Sycamore	<i>Platanus racemosa</i>				



AMERICAN JEWISH UNIVERSITY, BRANDEIS BARDIN CAMPUS FACILITIES UPGRADE PROJECT

Results

Tree Tag No.	Common Name	Scientific Name	Proposed for Removal	Encroachment Zone Impacted		Tree Valuation (Impacted Protected/Heritage Trees Only)
				Impacted Encroachment Zone (Less than 20% impacted)	Significantly Impacted Encroachment Zone (More than 20% impacted)	
905	Sycamore	<i>Platanus racemosa</i>				
906	Peruvian Pepper Tree	<i>Schinus molle</i>		X		
907	Coast Live Oak	<i>Quercus agrifolia</i>		X		
908	Peruvian Pepper Tree	<i>Schinus molle</i>				
909	Coast Live Oak	<i>Quercus agrifolia</i>				



AMERICAN JEWISH UNIVERSITY, BRANDEIS BARDIN CAMPUS FACILITIES UPGRADE PROJECT

Results

Tree Tag No.	Common Name	Scientific Name	Proposed for Removal	Encroachment Zone Impacted		Tree Valuation (Impacted Protected/Heritage Trees Only)
				Impacted Encroachment Zone (Less than 20% impacted)	Significantly Impacted Encroachment Zone (More than 20% impacted)	
910	Coast Live Oak	<i>Quercus agrifolia</i>				
911	Coast Live Oak	<i>Quercus agrifolia</i>				
912	Coast Live Oak	<i>Quercus agrifolia</i>		X		
913	Coast Live Oak	<i>Quercus agrifolia</i>		X		
914	Aleppo Pine	<i>Pinus halepensis</i>		X		



AMERICAN JEWISH UNIVERSITY, BRANDEIS BARDIN CAMPUS FACILITIES UPGRADE PROJECT

Results

Tree Tag No.	Common Name	Scientific Name	Proposed for Removal	Encroachment Zone Impacted		Tree Valuation (Impacted Protected/Heritage Trees Only)
				Impacted Encroachment Zone (Less than 20% impacted)	Significantly Impacted Encroachment Zone (More than 20% impacted)	
915	Coast Live Oak	<i>Quercus agrifolia</i>				
916	Coast Live Oak	<i>Quercus agrifolia</i>				
917	Coast Live Oak	<i>Quercus agrifolia</i>				
918	Coast Live Oak	<i>Quercus agrifolia</i>		X		
919	Peruvian Pepper Tree	<i>Schinus molle</i>		X		



AMERICAN JEWISH UNIVERSITY, BRANDEIS BARDIN CAMPUS FACILITIES UPGRADE PROJECT

Results

Tree Tag No.	Common Name	Scientific Name	Proposed for Removal	Encroachment Zone Impacted		Tree Valuation (Impacted Protected/Heritage Trees Only)
				Impacted Encroachment Zone (Less than 20% impacted)	Significantly Impacted Encroachment Zone (More than 20% impacted)	
920	Peruvian Pepper Tree	<i>Schinus molle</i>				
921	Peruvian Pepper Tree	<i>Schinus molle</i>			X	\$54,799.00
922	Coast Live Oak	<i>Quercus agrifolia</i>			X	\$343.00
923	Coast Live Oak	<i>Quercus agrifolia</i>			X	\$1,340.00
924	Peruvian Pepper Tree	<i>Schinus molle</i>		X		



AMERICAN JEWISH UNIVERSITY, BRANDEIS BARDIN CAMPUS FACILITIES UPGRADE PROJECT

Results

Tree Tag No.	Common Name	Scientific Name	Proposed for Removal	Encroachment Zone Impacted		Tree Valuation (Impacted Protected/Heritage Trees Only)
				Impacted Encroachment Zone (Less than 20% impacted)	Significantly Impacted Encroachment Zone (More than 20% impacted)	
925	Peruvian Pepper Tree	<i>Schinus molle</i>				
926	Peruvian Pepper Tree	<i>Schinus molle</i>		X		
927	Peruvian Pepper Tree	<i>Schinus molle</i>				
928	Peruvian Pepper Tree	<i>Schinus molle</i>				
929	Peruvian Pepper Tree	<i>Schinus molle</i>				



AMERICAN JEWISH UNIVERSITY, BRANDEIS BARDIN CAMPUS FACILITIES UPGRADE PROJECT

Results

Tree Tag No.	Common Name	Scientific Name	Proposed for Removal	Encroachment Zone Impacted		Tree Valuation (Impacted Protected/Heritage Trees Only)
				Impacted Encroachment Zone (Less than 20% impacted)	Significantly Impacted Encroachment Zone (More than 20% impacted)	
930	Peruvian Pepper Tree	<i>Schinus molle</i>				
931	Peruvian Pepper Tree	<i>Schinus molle</i>				
932	Coast Live Oak	<i>Quercus agrifolia</i>				
933	Peruvian Pepper Tree	<i>Schinus molle</i>			X	
934	Coast Live Oak	<i>Quercus agrifolia</i>			X	\$972.00



AMERICAN JEWISH UNIVERSITY, BRANDEIS BARDIN CAMPUS FACILITIES UPGRADE PROJECT

Results

Tree Tag No.	Common Name	Scientific Name	Proposed for Removal	Encroachment Zone Impacted		Tree Valuation (Impacted Protected/Heritage Trees Only)
				Impacted Encroachment Zone (Less than 20% impacted)	Significantly Impacted Encroachment Zone (More than 20% impacted)	
935	Coast Live Oak	<i>Quercus agrifolia</i>		X		
936	Coast Live Oak	<i>Quercus agrifolia</i>			X	\$748.00
937	Coast Live Oak	<i>Quercus agrifolia</i>			X	\$858.00
938	Peruvian Pepper Tree	<i>Schinus molle</i>		X		
939	Peruvian Pepper Tree	<i>Schinus molle</i>				



AMERICAN JEWISH UNIVERSITY, BRANDEIS BARDIN CAMPUS FACILITIES UPGRADE PROJECT

Results

Tree Tag No.	Common Name	Scientific Name	Proposed for Removal	Encroachment Zone Impacted		Tree Valuation (Impacted Protected/Heritage Trees Only)
				Impacted Encroachment Zone (Less than 20% impacted)	Significantly Impacted Encroachment Zone (More than 20% impacted)	
940	Peruvian Pepper Tree	<i>Schinus molle</i>				
941	Peruvian Pepper Tree	<i>Schinus molle</i>				
942	Peruvian Pepper Tree	<i>Schinus molle</i>				
943	Peruvian Pepper Tree	<i>Schinus molle</i>		X		
944	Peruvian Pepper Tree	<i>Schinus molle</i>				



AMERICAN JEWISH UNIVERSITY, BRANDEIS BARDIN CAMPUS FACILITIES UPGRADE PROJECT

Results

Tree Tag No.	Common Name	Scientific Name	Proposed for Removal	Encroachment Zone Impacted		Tree Valuation (Impacted Protected/Heritage Trees Only)
				Impacted Encroachment Zone (Less than 20% impacted)	Significantly Impacted Encroachment Zone (More than 20% impacted)	
945	Peruvian Pepper Tree	<i>Schinus molle</i>		X		
946	Coast Live Oak	<i>Quercus agrifolia</i>				
947	Peruvian Pepper Tree	<i>Schinus molle</i>		X		
948	Peruvian Pepper Tree	<i>Schinus molle</i>				
949	Coast Live Oak	<i>Quercus agrifolia</i>				



AMERICAN JEWISH UNIVERSITY, BRANDEIS BARDIN CAMPUS FACILITIES UPGRADE PROJECT

Results

Tree Tag No.	Common Name	Scientific Name	Proposed for Removal	Encroachment Zone Impacted		Tree Valuation (Impacted Protected/Heritage Trees Only)
				Impacted Encroachment Zone (Less than 20% impacted)	Significantly Impacted Encroachment Zone (More than 20% impacted)	
950	Coast Live Oak	<i>Quercus agrifolia</i>				
951	Coast Live Oak	<i>Quercus agrifolia</i>				
952	Coast Live Oak	<i>Quercus agrifolia</i>				
953	Coast Live Oak	<i>Quercus agrifolia</i>				
954	Coast Live Oak	<i>Quercus agrifolia</i>				



AMERICAN JEWISH UNIVERSITY, BRANDEIS BARDIN CAMPUS FACILITIES UPGRADE PROJECT

Results

Tree Tag No.	Common Name	Scientific Name	Proposed for Removal	Encroachment Zone Impacted		Tree Valuation (Impacted Protected/Heritage Trees Only)
				Impacted Encroachment Zone (Less than 20% impacted)	Significantly Impacted Encroachment Zone (More than 20% impacted)	
955	Coast Live Oak	<i>Quercus agrifolia</i>				
956	Coast Live Oak	<i>Quercus agrifolia</i>				
957	Peruvian Pepper Tree	<i>Schinus molle</i>	X			
958	Canary Island Pine	<i>Pinus canariensis</i>	X			
959	Cork Oak	<i>Quercus suber</i>			X	\$3,545.00



AMERICAN JEWISH UNIVERSITY, BRANDEIS BARDIN CAMPUS FACILITIES UPGRADE PROJECT

Results

Tree Tag No.	Common Name	Scientific Name	Proposed for Removal	Encroachment Zone Impacted		Tree Valuation (Impacted Protected/Heritage Trees Only)
				Impacted Encroachment Zone (Less than 20% impacted)	Significantly Impacted Encroachment Zone (More than 20% impacted)	
960	Peruvian Pepper Tree	<i>Schinus molle</i>	X			
961	Peruvian Pepper Tree	<i>Schinus molle</i>	X			
962	Peruvian Pepper Tree	<i>Schinus molle</i>	X			
963	Coast Live Oak	<i>Quercus agrifolia</i>		X		
964	Peruvian Pepper Tree	<i>Schinus molle</i>	X			



AMERICAN JEWISH UNIVERSITY, BRANDEIS BARDIN CAMPUS FACILITIES UPGRADE PROJECT

Results

Tree Tag No.	Common Name	Scientific Name	Proposed for Removal	Encroachment Zone Impacted		Tree Valuation (Impacted Protected/Heritage Trees Only)
				Impacted Encroachment Zone (Less than 20% impacted)	Significantly Impacted Encroachment Zone (More than 20% impacted)	
965	Peruvian Pepper Tree	<i>Schinus molle</i>	X			
966	Peruvian Pepper Tree	<i>Schinus molle</i>	X			
967	Peruvian Pepper Tree	<i>Schinus molle</i>	X			
968	Peruvian Pepper Tree	<i>Schinus molle</i>	X			
969	Coast Live Oak	<i>Quercus agrifolia</i>	X			\$727



AMERICAN JEWISH UNIVERSITY, BRANDEIS BARDIN CAMPUS FACILITIES UPGRADE PROJECT

Results

Tree Tag No.	Common Name	Scientific Name	Proposed for Removal	Encroachment Zone Impacted		Tree Valuation (Impacted Protected/Heritage Trees Only)
				Impacted Encroachment Zone (Less than 20% impacted)	Significantly Impacted Encroachment Zone (More than 20% impacted)	
970	Peruvian Pepper Tree	<i>Schinus molle</i>	X			
971	Coast Live Oak	<i>Quercus agrifolia</i>				
972	Peruvian Pepper Tree	<i>Schinus molle</i>	X			
973	Coast Live Oak	<i>Quercus agrifolia</i>	X			\$403
974	Coast Live Oak	<i>Quercus agrifolia</i>	X			\$1,271



AMERICAN JEWISH UNIVERSITY, BRANDEIS BARDIN CAMPUS FACILITIES UPGRADE PROJECT

Results

Tree Tag No.	Common Name	Scientific Name	Proposed for Removal	Encroachment Zone Impacted		Tree Valuation (Impacted Protected/Heritage Trees Only)
				Impacted Encroachment Zone (Less than 20% impacted)	Significantly Impacted Encroachment Zone (More than 20% impacted)	
975	Coast Live Oak	<i>Quercus agrifolia</i>				
976	Aleppo Pine	<i>Pinus halepensis</i>	X			
977	Aleppo Pine	<i>Pinus halepensis</i>	X			
978	Peruvian Pepper Tree	<i>Schinus molle</i>	X			
979	Peruvian Pepper Tree	<i>Schinus molle</i>	X			



AMERICAN JEWISH UNIVERSITY, BRANDEIS BARDIN CAMPUS FACILITIES UPGRADE PROJECT

Results

Tree Tag No.	Common Name	Scientific Name	Proposed for Removal	Encroachment Zone Impacted		Tree Valuation (Impacted Protected/Heritage Trees Only)
				Impacted Encroachment Zone (Less than 20% impacted)	Significantly Impacted Encroachment Zone (More than 20% impacted)	
980	Italian Cypress	<i>Cupressus sempervirens</i>	X			
981	Mimosa Tree	<i>Albizia</i> sp.	X			
982	Peruvian Pepper Tree	<i>Schinus molle</i>	X			
983	Fan palm	<i>Washingtonia robusta</i>	X			
984	Peruvian Pepper Tree	<i>Schinus molle</i>	X			
985	Peruvian Pepper Tree	<i>Schinus molle</i>			X	\$57,796.00



AMERICAN JEWISH UNIVERSITY, BRANDEIS BARDIN CAMPUS FACILITIES UPGRADE PROJECT

Results

Tree Tag No.	Common Name	Scientific Name	Proposed for Removal	Encroachment Zone Impacted		Tree Valuation (Impacted Protected/Heritage Trees Only)
				Impacted Encroachment Zone (Less than 20% impacted)	Significantly Impacted Encroachment Zone (More than 20% impacted)	
986	Peruvian Pepper Tree	<i>Schinus molle</i>				
987	Olive	<i>Olea</i> sp.				
988	African sumac	<i>Searsia</i> sp.				
989	African sumac	<i>Searsia</i> sp.				
990	African sumac	<i>Searsia</i> sp.				
991	African sumac	<i>Searsia</i> sp.				



AMERICAN JEWISH UNIVERSITY, BRANDEIS BARDIN CAMPUS FACILITIES UPGRADE PROJECT

Results

Tree Tag No.	Common Name	Scientific Name	Proposed for Removal	Encroachment Zone Impacted		Tree Valuation (Impacted Protected/Heritage Trees Only)
				Impacted Encroachment Zone (Less than 20% impacted)	Significantly Impacted Encroachment Zone (More than 20% impacted)	
992	African sumac	<i>Searsia</i> sp.				
993	African sumac	<i>Searsia</i> sp.				
994	African sumac	<i>Searsia</i> sp.				
995	Acacia	<i>Acacia</i> sp.				
996	African sumac	<i>Searsia</i> sp.				
997	African sumac	<i>Searsia</i> sp.				



AMERICAN JEWISH UNIVERSITY, BRANDEIS BARDIN CAMPUS FACILITIES UPGRADE PROJECT

Results

Tree Tag No.	Common Name	Scientific Name	Proposed for Removal	Encroachment Zone Impacted		Tree Valuation (Impacted Protected/Heritage Trees Only)
				Impacted Encroachment Zone (Less than 20% impacted)	Significantly Impacted Encroachment Zone (More than 20% impacted)	
998	African sumac	<i>Searsia</i> sp.		X		
999	Peruvian Pepper Tree	<i>Schinus molle</i>				
1000	African sumac	<i>Searsia</i> sp.				



Recommendations

6.0 RECOMMENDATIONS

Stantec recommends preserving the remaining 337 trees (health ratings A through D), if possible, based on Project design/needs. Trees with a health rating of 2, while not being recommended for removal at this time, should be monitored and assessed on a regular basis; if the health of individual trees with a health rating of D continue to deteriorate or they become a safety concern they should be considered for removal prior to construction of the Project. The 22 trees with a health rating of F should be evaluated for potential removal to mitigate the risk of failure. Removal of trees will require approval from the County of Ventura. If approved, mitigation for the removed trees will be required.

The County of Ventura Tree Protection Ordinance, Sec. 8107-25.10, requires the replacement of lost trees on a cross-sectional area basis. The ratio of replacement can vary. The purpose of these guidelines is to outline the operational methods in which the required replacement area can be achieved. Because the methods are not limited to the planting of new trees, the term “offset” is used to better describe the range of options available to meet the intent of the ordinance.

The following are optional ways of achieving the ordinance required amount of “replacement” trees. The use of one or a combination of options is permitted in accordance with Sec. 8107-25.10.1.

- a) Transplanting of trees on-site or off-site. This can include transplanting to a nursery for holding purposes. (Under the ordinance, this transplantation technically is not considered a loss that requires replacement)
- b) Reforestation in accordance with a professionally prepared plan, such that the anticipated growth can be legitimately counted towards the total replacement area required.
- c) Planting of new trees.
- d) Dedication of land in-fee or through appropriate easements that are suitable for the planting and survival of protected trees.
- e) Dedication of land in-fee or through appropriate easements that contains protected trees or significant habitat suitable for preservation.
- f) Financial contributions to appropriate agencies/entities that further the above options as well as the following objectives: the general preservation, regeneration and maintenance of protected trees and significant habitat; the identification and official designation of “historical” trees; and educational and informational programs related to the value of protected trees and significant habitat.

The “offset” options described above are to be implemented in accordance with the following guidelines:

- a) On or off the site where the loss of protected trees occurred, but always within the County.



AMERICAN JEWISH UNIVERSITY, BRANDEIS BARDIN CAMPUS FACILITIES UPGRADE PROJECT

Recommendations

- b) The species serving as “replacement/offset” need not always be the same as the species that was removed.
- c) Financial contributions are to be based on the purchase price of the replacement tree stock of the same species as the removed tree(s).
- d) Adequate provisions are to be made for the maintenance of new plantings to ensure their survival.

Where trees are removed, and to augment remaining trees, Stantec recommends replacement species as presented below. Proposed species for replacement of trees include native trees such as:

- coast live oak (*Quercus agrifolia*);
- scrub oak (*Quercus berberidifolia*);
- sycamore (*Platanus racemosa*);
- big leaf maple (*Acer macrophyllum*); and
- white alder (*Alnus rhombifolia*).

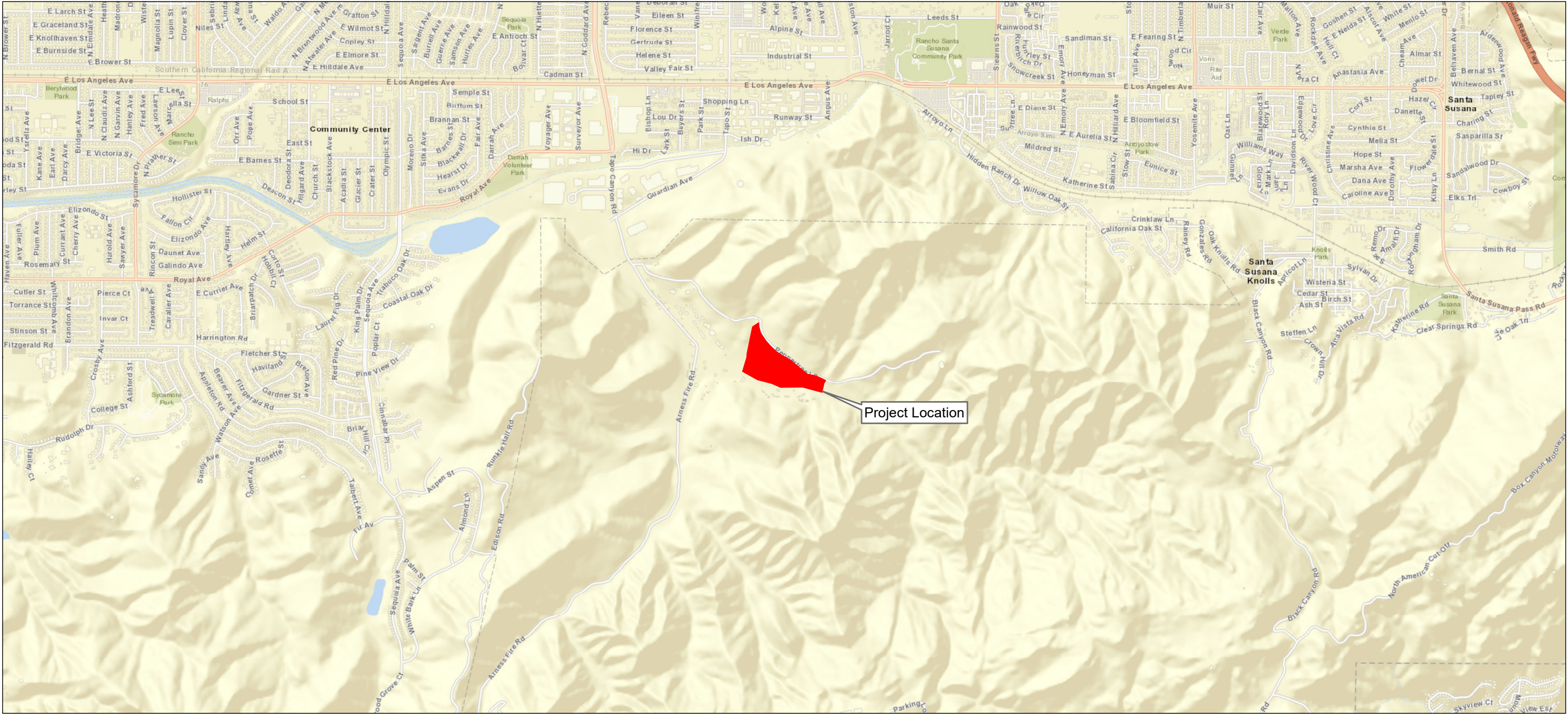
It is recommended that all replacement tree stock be 24-inch box trees as trees of this size are generally able to establish roots in a relatively short amount of time. A 24-inch box tree can catch up to and outgrow larger box trees because it takes less time for the smaller tree to establish a new root system if it is in good health. It is recommended any new tree planted should be placed in a location where the roots will not interfere with foundations, roads, sidewalks, and water/sewage lines. Finally, care should also be taken to have the trees properly pruned by an ISA Certified Arborist, so they are able to maintain good and proper branch structure.



APPENDICES

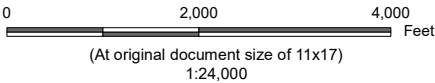
Appendix A FIGURES





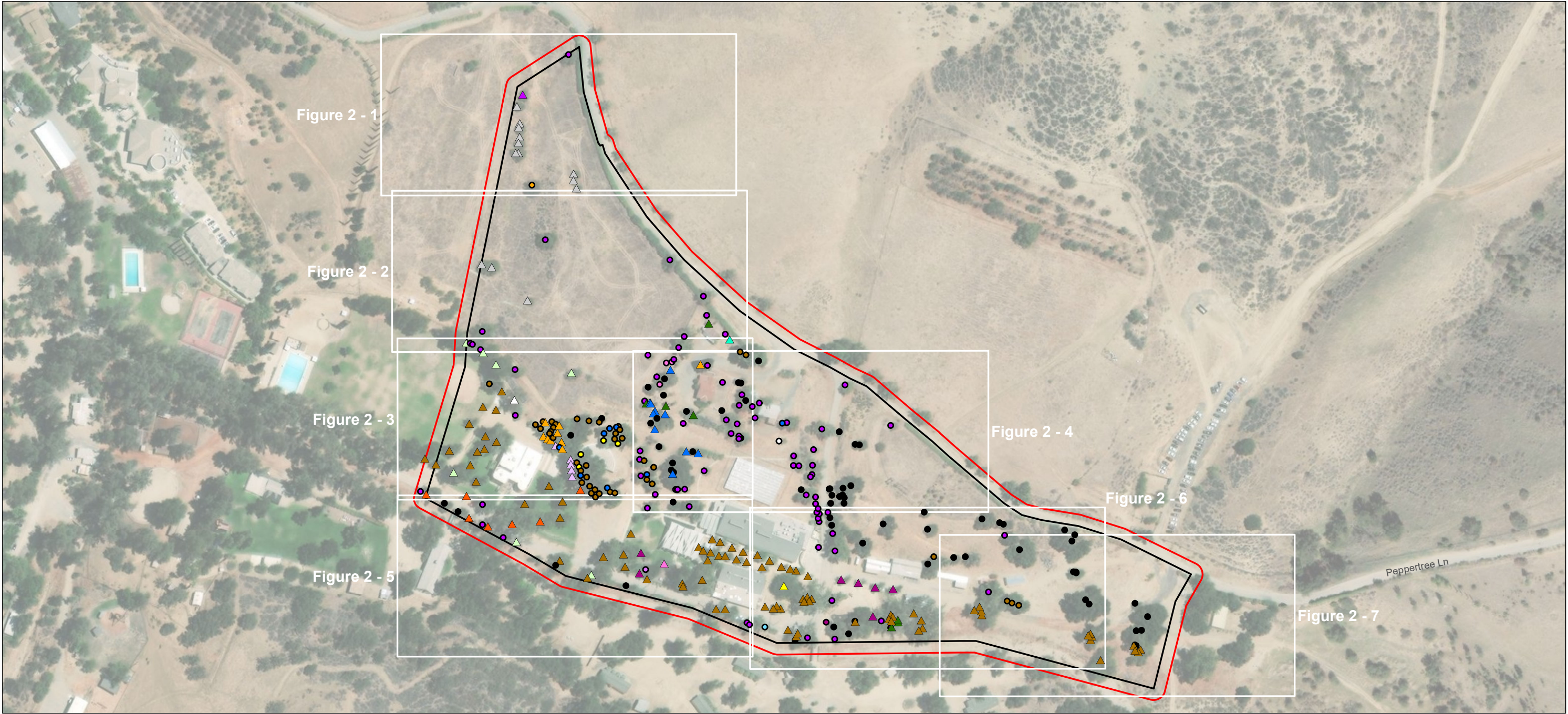
Notes
1. Coordinate System: NAD 1983 StatePlane California V FIPS 0405 Feet
2. Data Sources: Stantec 2022.
3. Background: Sources: Esri, GEBCO, NOAA, National Geographic, Garmin, HERE, Geonames.org, and other contributors
Sources: Esri, HERE, Garmin, USGS, Intermap, INCREMENT P, NRCan, Esri Japan, METI, Esri China (Hong Kong), Esri Korea, Esri (Thailand), NGCC, (c) OpenStreetMap contributors, and the GIS User Community
Esri, Garmin, GEBCO, NOAA NGDC, and other contributors

 Project Location



Project Location
1101 Peppertree Lane, Brandeis, CA 93064
Client/Project
American Jewish University, Brandeis-Bardin Campus
Facilities Upgrade Project
Arborist Report

Figure No.
1
Title
Project Location



Project Boundary
Survey Area

Tree Species-Locations

- Acacia sp.
- Alder
- Aleppo Pine
- Apple tree
- Arizona Ash
- Canary Island Date
- Canary Island Pine

- Coast Live Oak
- Cork Oak
- Deodar Cedar
- Peruvian Pepper Tree
- African Sumac
- Fan palm
- Italian Cypress
- Liquidambar
- Maple sp.
- Mimosa Tree

- Mulberry
- Olive
- River Red Gum
- Scrub Oak
- Stone Pine
- Sycamore
- Sydney Blue Gum
- Tasmanian Blue Gum

0 220 440 Feet
(At original document size of 11x17)
1:2,640



Project Location
1101 Peppertree Lane, Brandeis, CA 93064
Client/Project
American Jewish University, Brandeis-Bardin Campus
Facilities Upgrade Project
Arborist Report

Prepared by DL on 2022-08-24
TR by SET on 2022-08-24
IR by JV on 2022-08-24

2042614000

Figure No.

2-0

Title

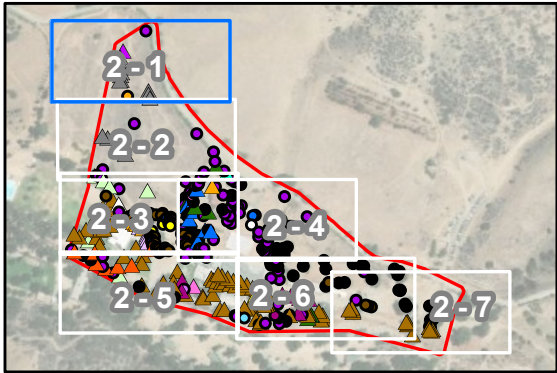
Tree Location map

Notes

- Coordinate System: NAD 1983 StatePlane California V FIPS 0405 Feet
- Data Sources: Stantec 2022.
- Background: Source: Esri, Maxar, Earthstar Geographics, and the GIS User Community

V:\1858\Active\2042614000_AJU_Siml\Valley\03_data\gis_cad\gis\Figure2_TreeSurvey_02102022.mxd Revised: 2022-08-24 By: Dalaw

V:\1858\Active\2042614000_AJU_SimlValley\03_data\gis_cad\gis\Figure2_TreeSurvey_DDP_02102022.mxd Revised: 2022-08-24 By: Dalaw



- Project Boundary
Survey Area
- Tree Species-Locations**
- Acacia sp.
 - Peruvian Pepper Tree
 - African Sumac
 - Olive

0 50 100 Feet
(At original document size of 11x17)
1:600

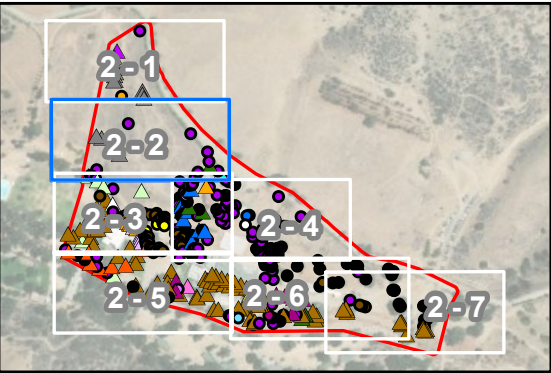


Project Location 1101 Peppertree Lane, Brandeis, CA 93064
Client/Project American Jewish University, Brandeis-Bardin Campus
Facilities Upgrade Project
Arborist Report

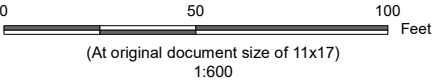
Figure No. 2 - 1
Title Tree Location map

Notes
1. Coordinate System: NAD 1983 StatePlane California V FIPS 0405 Feet
2. Data Sources: Stantec 2022.
3. Background: Source: Esri, Maxar, Earthstar Geographics, and the GIS User Community

Disclaimer: This document has been prepared based on information provided by others as cited in the Notes section. Stantec has not verified the accuracy and/or completeness of this information and shall not be responsible for any errors or omissions which may be incorporated herein as a result. Stantec assumes no responsibility for data supplied in electronic format, and the recipient accepts full responsibility for verifying the accuracy and completeness of the data.



- Project Boundary
Survey Area
- Tree Species-Locations**
- Aleppo Pine
 - Peruvian Pepper Tree
 - African Sumac
 - Fan palm
 - Mimosa Tree
 - Tasmanian Blue Gum

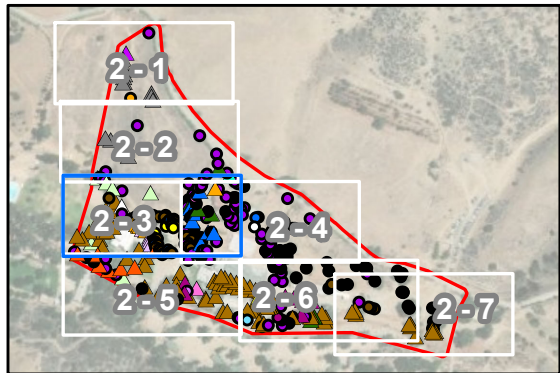
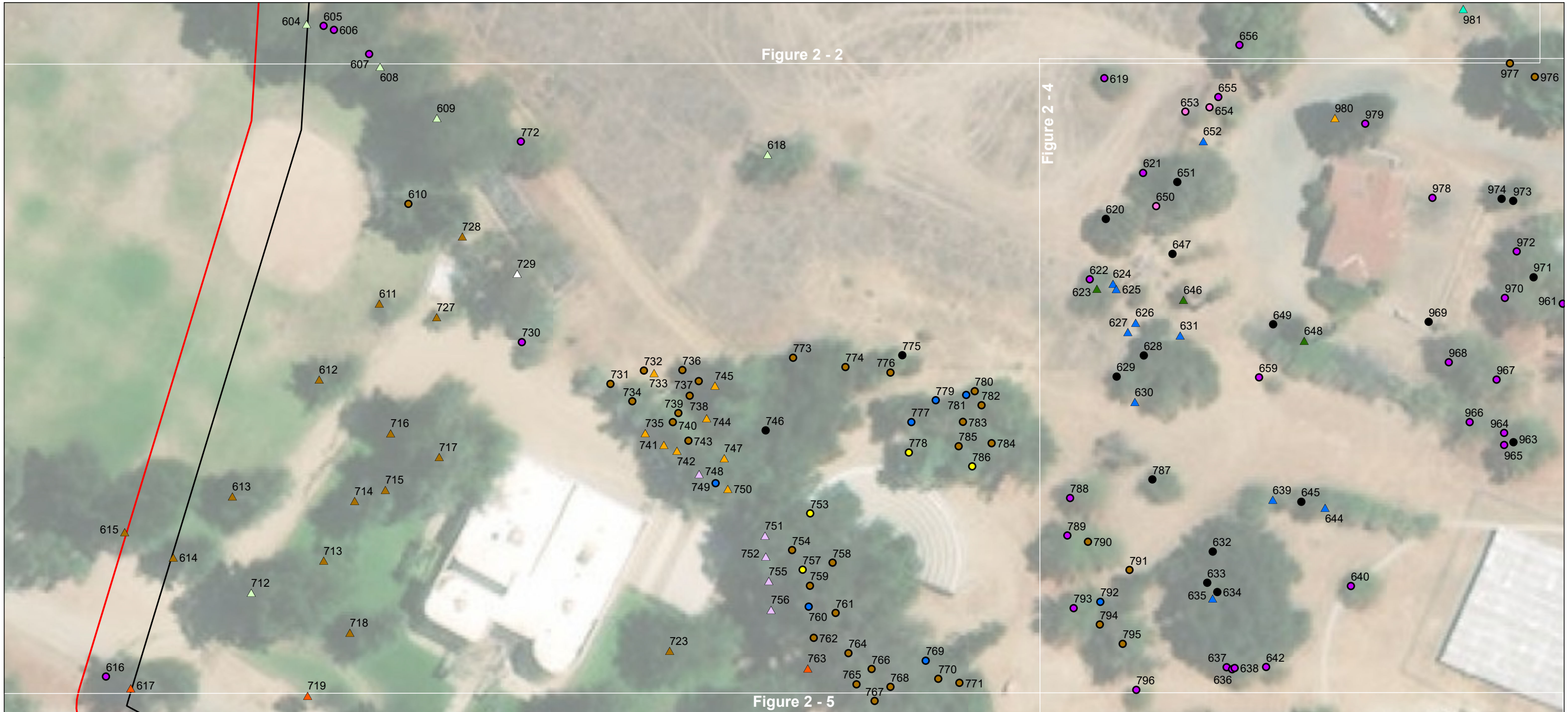


Project Location 1101 Peppertree Lane, Brandeis, CA 93064
Client/Project American Jewish University, Brandeis-Bardin Campus
Facilities Upgrade Project
Arborist Report

Figure No. 2 - 2
Title Tree Location map

Prepared by DL on 2022-08-24
TR by SET on 2022-08-24
IR by JV on 2022-08-24

Notes
1. Coordinate System: NAD 1983 StatePlane California V FIPS 0405 Feet
2. Data Sources: Stantec 2022.
3. Background: Source: Esri, Maxar, Earthstar Geographics, and the GIS User Community



Notes
1. Coordinate System: NAD 1983 StatePlane California V FIPS 0405 Feet
2. Data Sources: Stantec 2022.
3. Background: Source: Esri, Maxar, Earthstar Geographics, and the GIS User Community

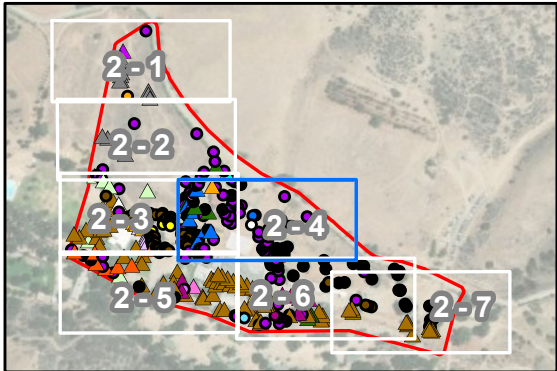
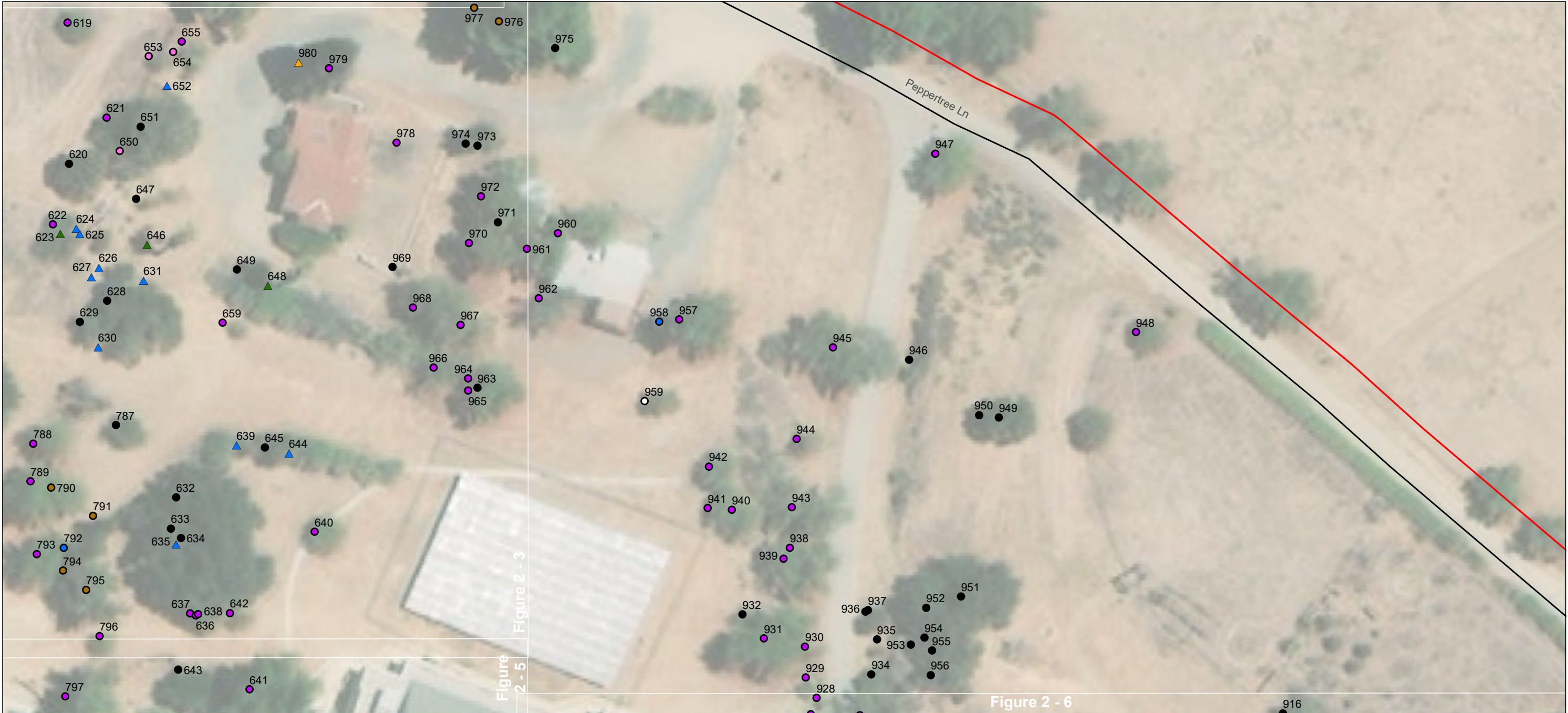
- | | |
|-------------------------------|--------------------|
| Project Boundary | River Red Gum |
| Survey Area | Scrub Oak |
| Tree Species-Locations | Stone Pine |
| Alder | Sycamore |
| Aleppo Pine | Sydney Blue Gum |
| Canary Island Pine | Tasmanian Blue Gum |
| Deodar Cedar | |
| Peruvian Pepper Tree | |
| Fan palm | |
| Italian Cypress | |
| Mimosa Tree | |

0 50 100 Feet
(At original document size of 11x17)
1:600



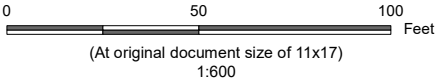
Project Location Prepared by DL on 2022-08-24
1101 Peppertree Lane, Brandeis, CA 93064 TR by SET on 2022-08-24
Client/Project 2042614000 IR by JV on 2022-08-24
American Jewish University, Brandeis-Bardin Campus
Facilities Upgrade Project
Arborist Report

Figure No.
2 - 3
Title
Tree Location map



- Project Boundary
Survey Area
- Tree Species-Locations**
- Alder
 - Aleppo Pine
 - Canary Island Pine
 - Coast Live Oak
 - Cork Oak
 - Peruvian Pepper Tree
 - Fan palm
 - Italian Cypress
 - Scrub Oak

Notes
1. Coordinate System: NAD 1983 StatePlane California V FIPS 0405 Feet
2. Data Sources: Stantec 2022.
3. Background: Source: Esri, Maxar, Earthstar Geographics, and the GIS User Community



Project Location
1101 Peppertree Lane, Brandeis, CA 93064

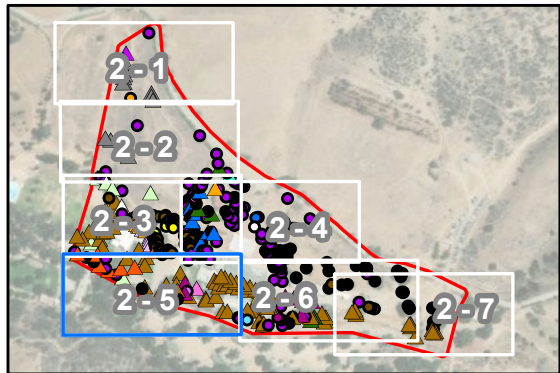
Client/Project
American Jewish University, Brandeis-Bardin Campus
Facilities Upgrade Project
Arborist Report

Figure No.
2 - 4

Title
Tree Location map

Prepared by DL on 2022-08-24
TR by SET on 2022-08-24
IR by JV on 2022-08-24

2042614000



- Project Boundary
Survey Area
- Tree Species-Locations**
- Aleppo Pine
 - Arizona Ash
 - Coast Live Oak
 - Peruvian Pepper Tree
 - Liquidambar
 - Maple sp.
 - Sycamore
 - Sydney Blue Gum
 - Tasmanian Blue Gum

0 50 100 Feet
(At original document size of 11x17)
1:600

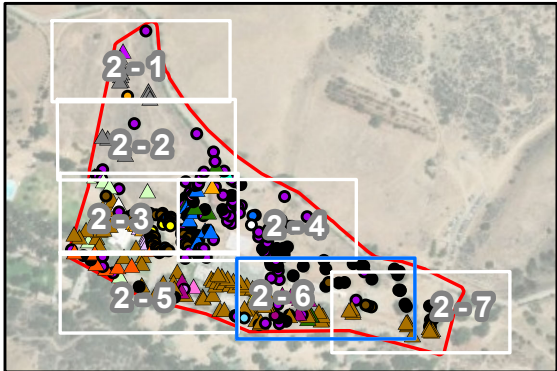
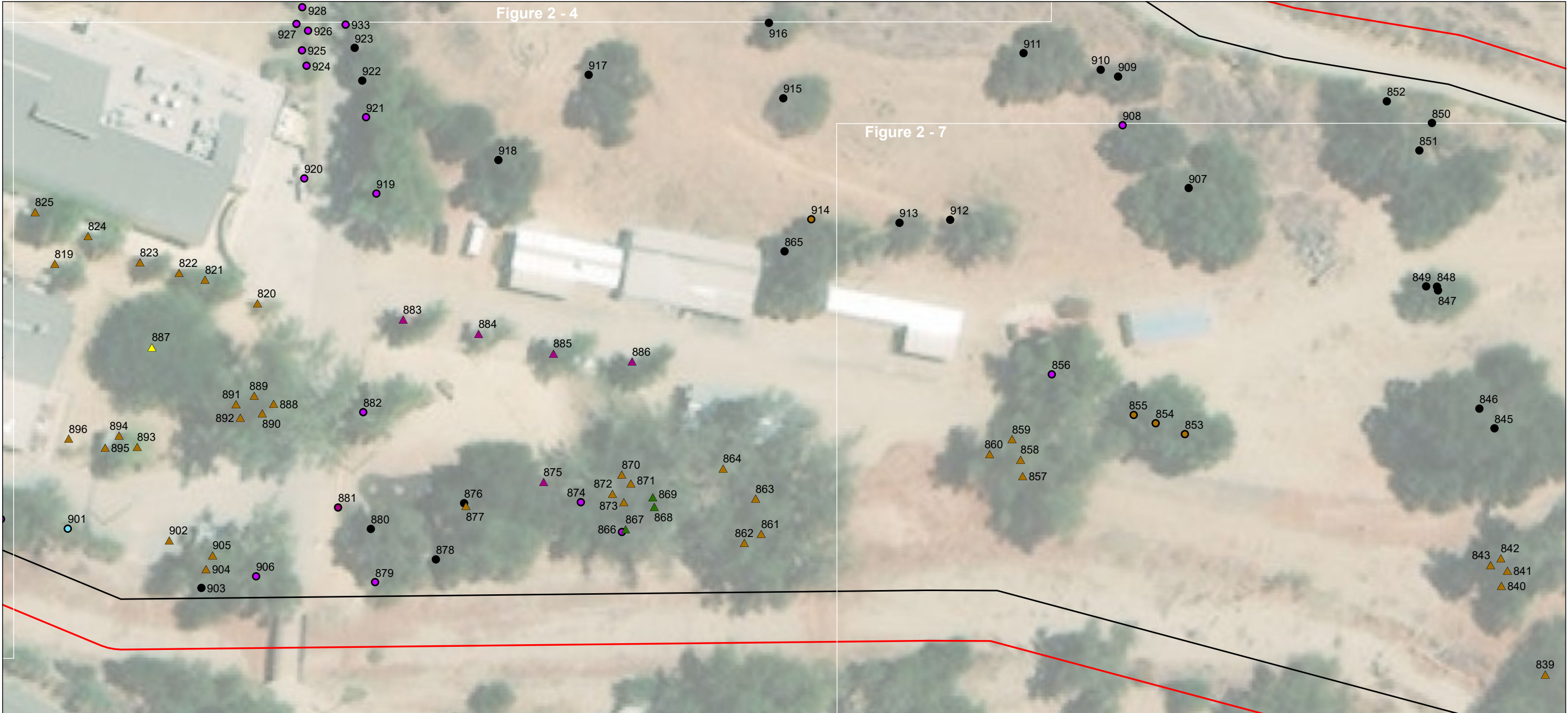


Project Location
1101 Peppertree Lane, Brandeis, CA 93064

Client/Project
American Jewish University, Brandeis-Bardin Campus
Facilities Upgrade Project
Arborist Report

Figure No.
2 - 5
Title
Tree Location map

Notes
1. Coordinate System: NAD 1983 StatePlane California V FIPS 0405 Feet
2. Data Sources: Stantec 2022.
3. Background: Source: Esri, Maxar, Earthstar Geographics, and the GIS User Community



- Project Boundary
Survey Area
- Tree Species-Locations**
- Aleppo Pine
 - Apple tree
 - Canary Island Date
 - Coast Live Oak
 - Peruvian Pepper Tree
 - Fan palm
 - Liquidambar
 - Mulberry
 - Sycamore

Notes

- Coordinate System: NAD 1983 StatePlane California V FIPS 0405 Feet
- Data Sources: Stantec 2022.
- Background: Source: Esri, Maxar, Earthstar Geographics, and the GIS User Community

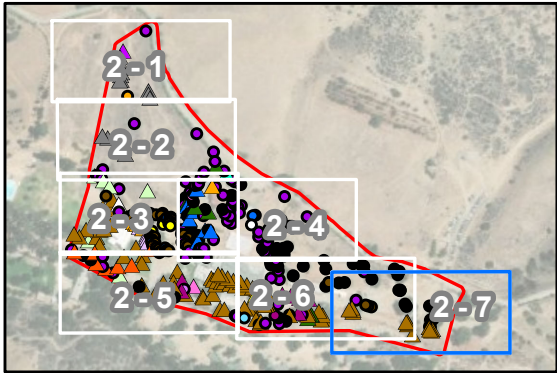
0 50 100 Feet
(At original document size of 11x17)
1:600



Project Location 1101 Peppertree Lane, Brandeis, CA 93064
Client/Project American Jewish University, Brandeis-Bardin Campus
Facilities Upgrade Project
Arborist Report
Figure No. 2 - 6
Title Tree Location map

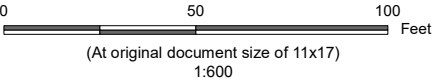
V:\1858\Active\2042614000_AJU_SimlValley\03_data\gis_cad\gis\Figure2_TreeSurvey_DDP_02102022.mxd Revised: 2022-08-24 By: Dalaw

Disclaimer: This document has been prepared based on information provided by others as cited in the Notes section. Stantec has not verified the accuracy and/or completeness of this information and shall not be responsible for any errors or omissions which may be incorporated herein as a result. Stantec assumes no responsibility for data supplied in electronic format, and the recipient accepts full responsibility for verifying the accuracy and completeness of the data.



- Project Boundary
Survey Area
- Tree Species-Locations**
- Aleppo Pine
 - Coast Live Oak
 - Peruvian Pepper Tree
 - Sycamore

Notes
1. Coordinate System: NAD 1983 StatePlane California V FIPS 0405 Feet
2. Data Sources: Stantec 2022.
3. Background: Source: Esri, Maxar, Earthstar Geographics, and the GIS User Community



Project Location 1101 Peppertree Lane, Brandeis, CA 93064
Client/Project American Jewish University, Brandeis-Bardin Campus
Facilities Upgrade Project
Arborist Report

Figure No. 2 - 7
Title Tree Location map

Prepared by DL on 2022-08-24
TR by SET on 2022-08-24
IR by JV on 2022-08-24

2042614000

V:\1858\Active\2042614000_AJU_SimlValley\03_data\gis_cad\gis\Figure2_TreeSurvey_DDP_02102022.mxd Revised: 2022-08-24 By: Dalaw

Appendix B REPRESENTATIVE PHOTOS



**STANTEC CONSULTING SERVICES INC.
PHOTOGRAPHIC RECORD**

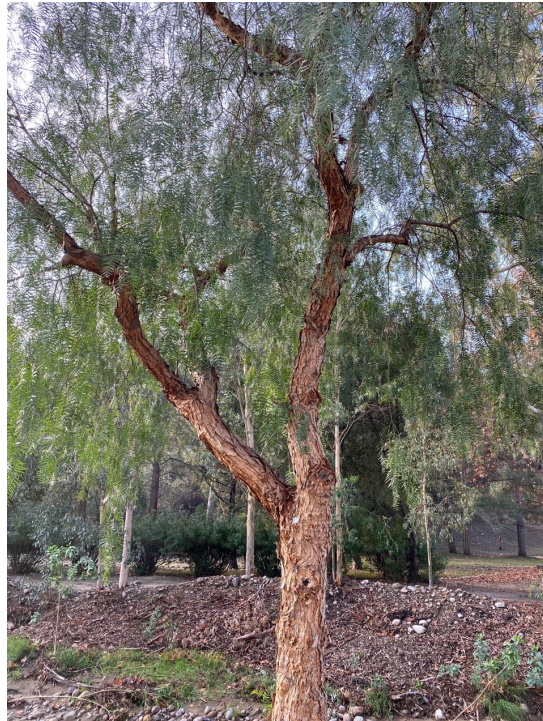
Client: AJU Facilities Upgrade Project

Job Number: 2042614000

Site Name: AJU

Photographer: E. Martin/A. Townsend/J.
Varonin

Photo 1: January 18, 2022



California peppertree (Tag 706) with exposed roots and rot in some branches.

Photo 2: January 18, 2022



Sycamore (Tag 723) with mistletoe, included bark, and evidence of sapsuckers.

**STANTEC CONSULTING SERVICES INC.
PHOTOGRAPHIC RECORD**

Job Number: 2042614000

Site Name: AJU

Photo 3: January 18, 2022



Aleppo pine (Tag 732) with a severe lean to the east.

Photo 4: January 18, 2022



Sycamore (Tag 811) with mistletoe, trunk rot, and borers.

**STANTEC CONSULTING SERVICES INC.
PHOTOGRAPHIC RECORD**

Client: AJU Facilities Upgrade Project

Job Number: 2042614000

Site Name: AJU

Photographer: E. Martin/A. Townsend/J.
Varonin

Photo 5: January 19, 2022



Coast live oak (Tag 850) with trunk rot that leans to the south.

Photo 6: January 19, 2022



Fan palm (Tag 867) that was documented in relatively good health.

**STANTEC CONSULTING SERVICES INC.
PHOTOGRAPHIC RECORD**

Job Number: 2042614000

Site Name: AJU

Photo 7: January 19, 2022



Sycamore (Tag 904) that leans south over the adjacent drainage.

Photo 8: January 25, 2022



Searsia sp. (Tag 992) found to be in good health; non-native species.